

Business Unit To Let



Unit 8 Stadium Business Park
Castle Road
Eurolink Estate

SITTINGBOURNE
Kent ME10 3BG

Location

Situated on the established Eurolink Estate on Castle Road at the junction with Gas Road and Stadium Way. Excellent access to the A249 (and M2).

Description

Clear span steel portal frame, 19'2" eaves height, plastisol insulated roof, brick elevations, sectional access door, integral offices, double glazed windows, office and warehouse lighting, concrete loading areas and block paviour parking. 4 parking spaces plus loading area.

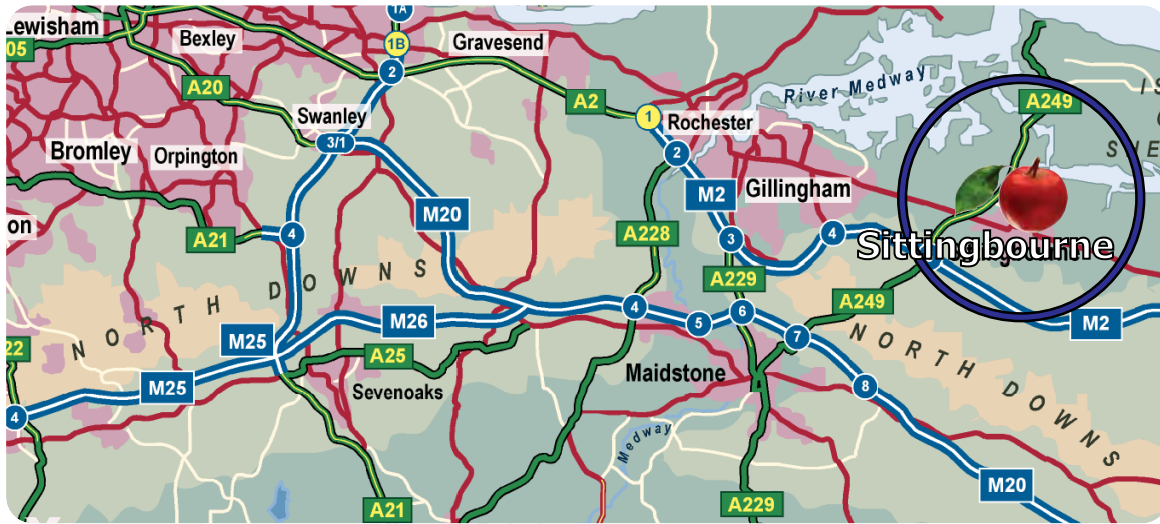
Warehouse	1,747
Office	764
	2,511 sqft

Terms

To Let at **£19,000**, plus vat. **Eligible Small Business Rates Relief** so if your sole premises Rates Payable 2018/19 **£2,650** (otherwise £6,360) (Rateable Values £13,250).



2,511 sqft



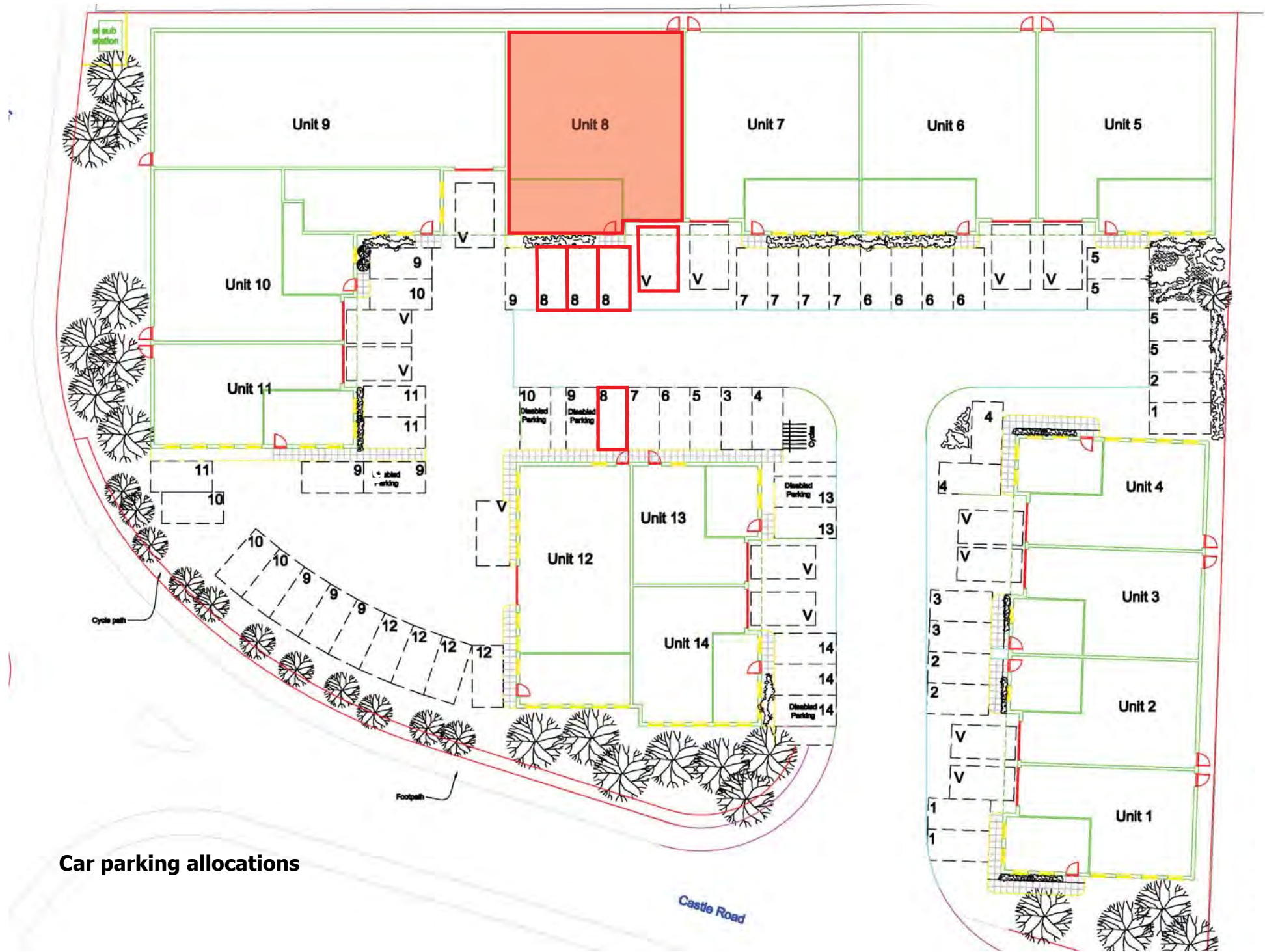

CORE
 COMMERCIAL
01892 834483
www.CoreCommercial.co.uk

David Marriott
 David@CoreCommercial.co.uk

Neil Mason
 Neil@CoreCommercial.co.uk

Core Commercial Limited, Unit 11 Offices, Dana Estate
 Transfesa Road, Paddock Wood, Kent TN12 6UT

These particulars are provided in good faith but do not form part of a contract. No statements are to be relied upon as statements of fact and parties intending to rely upon the information for any purpose whatsoever must satisfy themselves by inspection or otherwise as to the correctness of each statement.



Car parking allocations