

New Warehouse To Let

CORE
COMMERCIAL
01892 834483



**Unit 5, Adams Wharf
Branbridges Road**

**EAST
PECKHAM**

Kent TN12 5EJ

Location

East Peckham lies almost midway between Maidstone and Tonbridge on the A228 with the M20/M26 motorways about 6 miles to the north. The property is situated Just off the bypass adjoining a busy Co-op supermarket and petrol filling station.

Description

A 2019 built steel portal frame warehouse:

Eaves 24ft (28ft peak). 20kN/sqm floor loading. Insulated metal clad roofing with twin skin roof lights. Double glazed windows and doors. 2 electric roller shutter doors. LED lighting to warehouse. Burglar and fire alarms. Fibre Broadband. 18 car parking spaces plus loading areas.

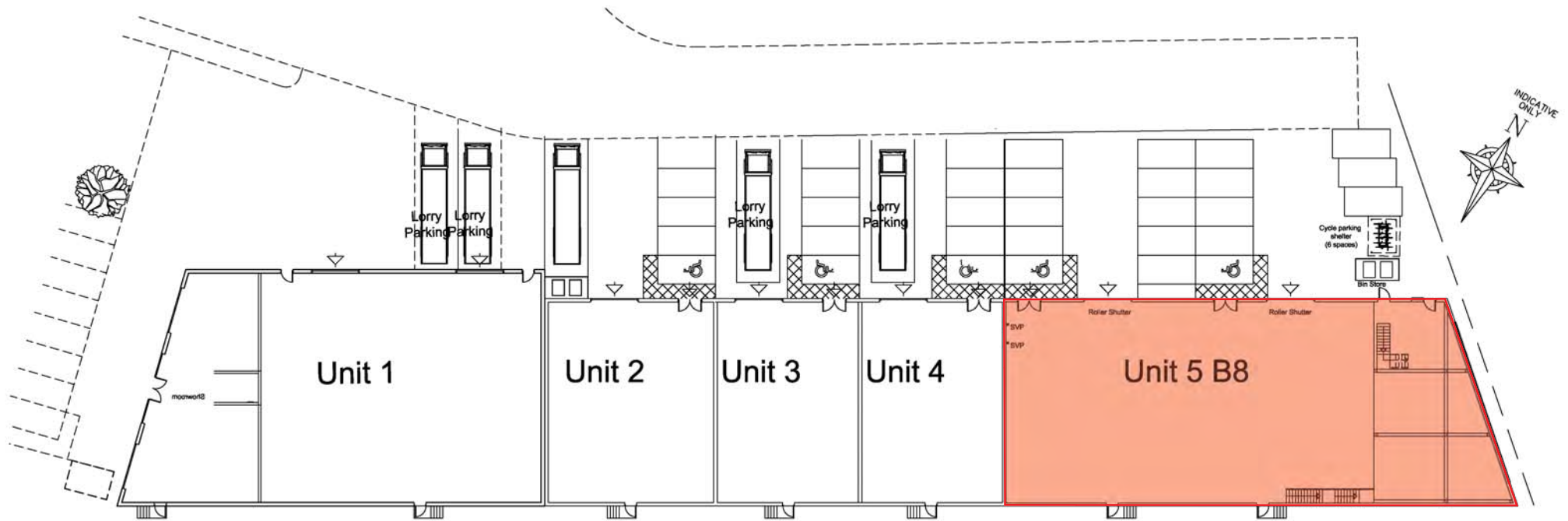
Ground	Warehouse	7,283
First	Storage	1,624
		8,907 sqft

Terms

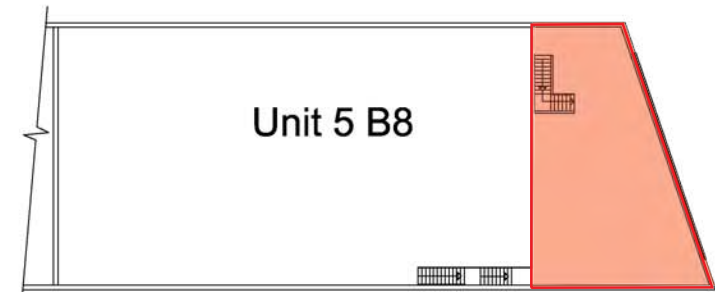
To Let at **£92,500** pa plus VAT subject to contract. Rates payable year 2022/23: £34,048 (Rateable Value £66,500).



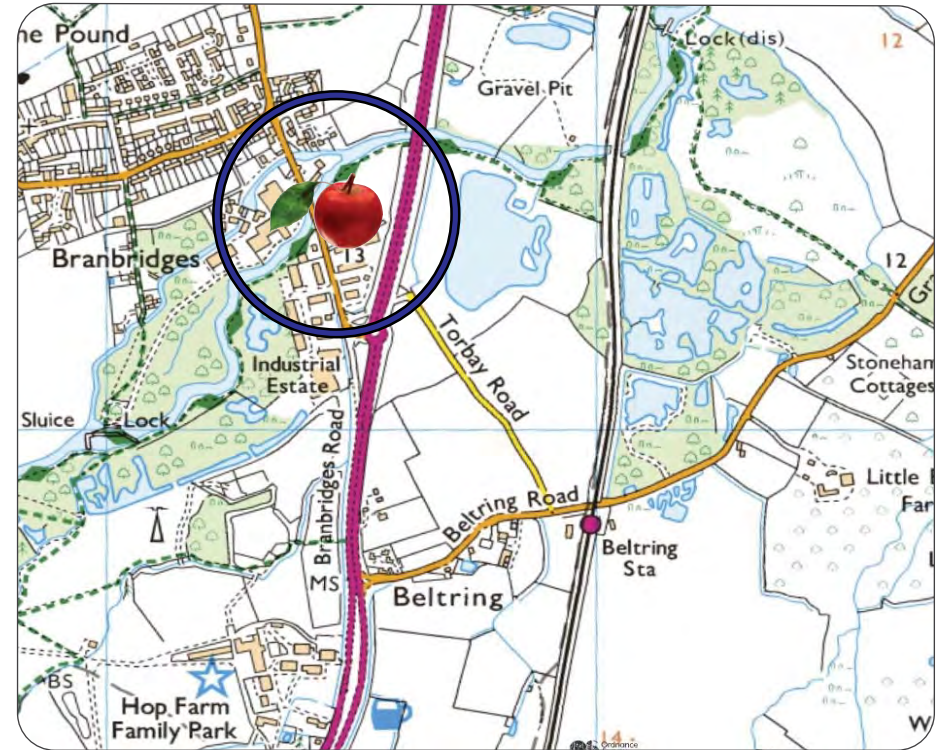
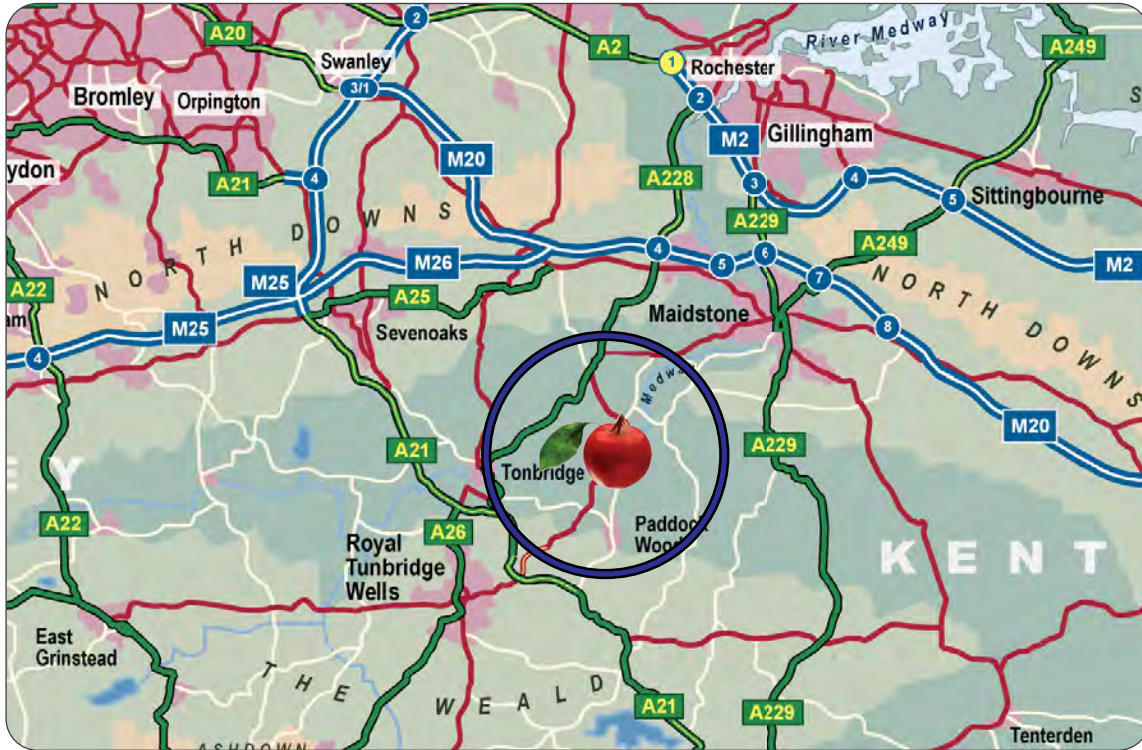
8,907 sqft



Units 5 - Ground Floor Plan



Unit 5 - First Floor Plan




CORE
 COMMERCIAL
01892 834483
www.CoreCommercial.co.uk

Neil Mason
 Neil@CoreCommercial.co.uk
 David Marriott
 David@CoreCommercial.co.uk

These particulars are provided in good faith but do not form part of a contract. No statements are to be relied upon as statements of fact and parties intending to rely upon the information for any purpose whatsoever must satisfy themselves by inspection or otherwise as to the correctness of each statement.

Core Commercial Limited, Unit 11 Offices, Dana Estate
Transfesa Road, Paddock Wood, Kent TN12 6UT



CORE
COMMERCIAL
01892 834483
www.CoreCommercial.co.uk

Neil Mason
Neil@CoreCommercial.co.uk
David Marriott
David@CoreCommercial.co.uk

These particulars are provided in good faith but do not form part of a contract. No statements are to be relied upon as statements of fact and parties intending to rely upon the information for any purpose whatsoever must satisfy themselves by inspection or otherwise as to the correctness of each statement.

Core Commercial Limited, Unit 11 Offices, Dana Estate
Transfesa Road, Paddock Wood, Kent TN12 6UT