

# Business unit To Let



**Unit 6, Integra ME  
Bircholt Road**

**MAIDSTONE**  
**Kent ME15 9GQ**

## Location

Maidstone is situated about 45 miles south of London. The property lies to the southeast of the town on the established Parkwood estate. Good access to the M20 motorway.

## Description

Modern business unit of portal frame construction with brick to about 8ft and lined profiled steel cladding above. Planning permission for B1, B2 and B8 uses. 3 phase power, water and mains gas. Sectional access doors. 3-4 dedicated parking spaces plus loading area plus communal spaces. Eaves height: 19'08" (6 metres).

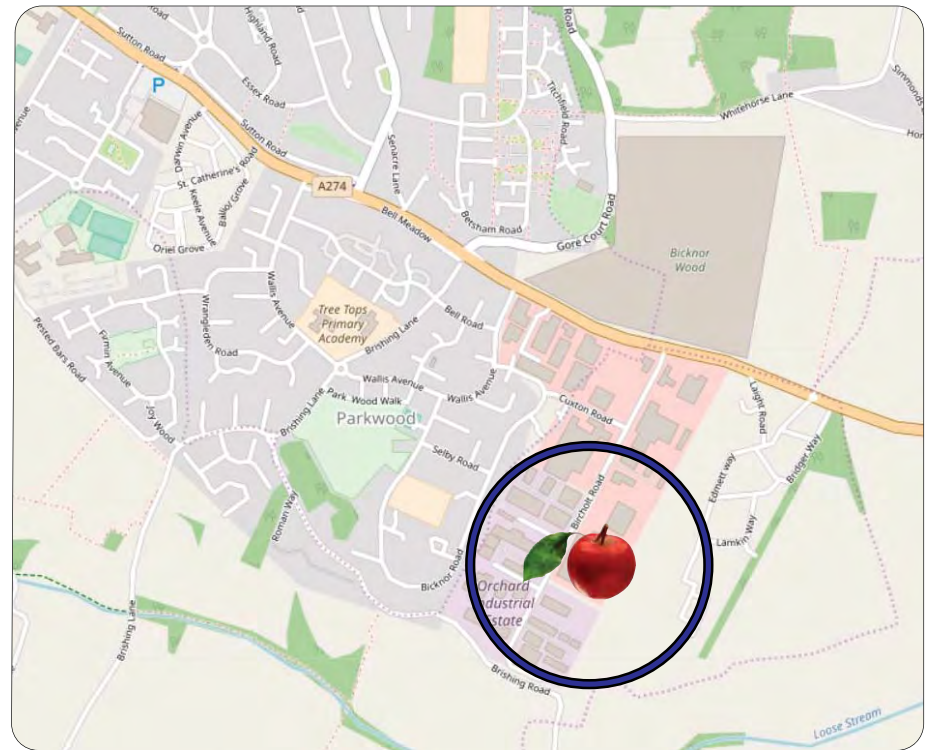
Ground Floor	2,377
Mezzanine stores	920
	<b>3,297 sqft</b>

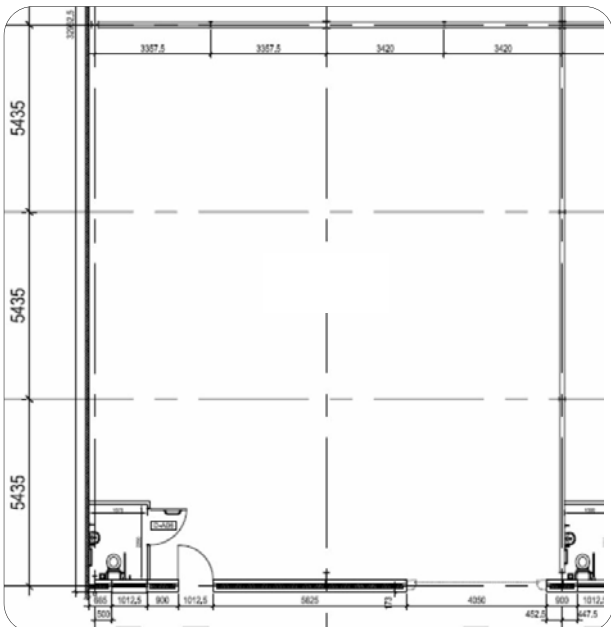
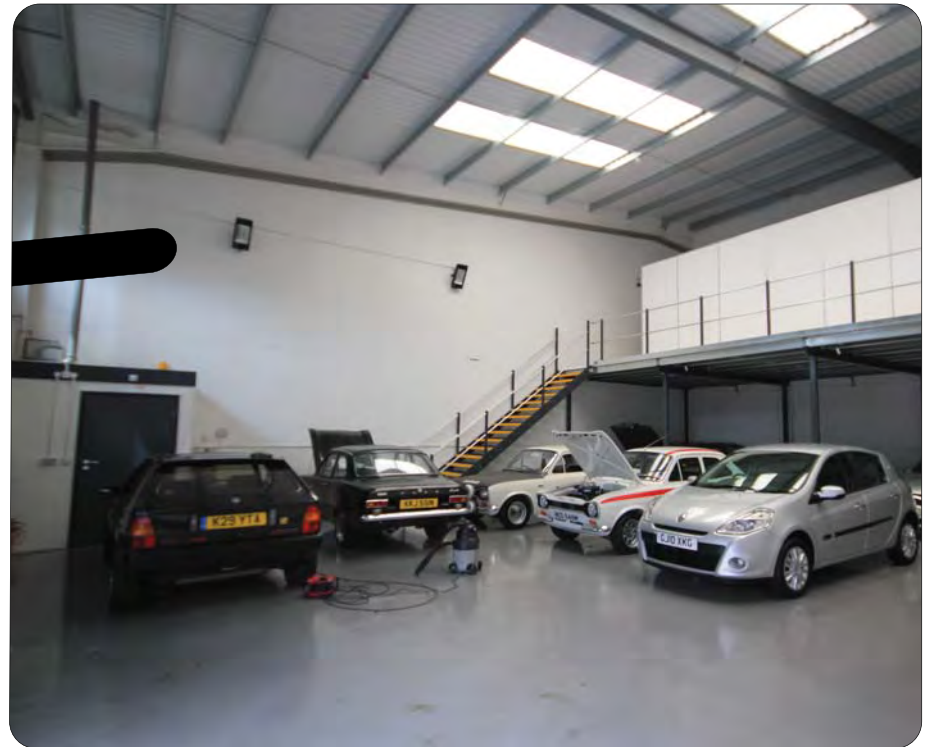
## Terms

To Let at **£21,500** per annum plus vat, subject to contract. Rates payable 2018/19 £9,000 (Rateable Value £18,750)



**3,297 sqft**





These particulars are provided in good faith but do not form part of a contract. No statements are to be relied upon as statements of fact and parties intending to rely upon the information for any purpose whatsoever must satisfy themselves by inspection or otherwise as to the correctness of each statement.



**CORE**  
COMMERCIAL  
**01892 834483**  
[www.CoreCommercial.co.uk](http://www.CoreCommercial.co.uk)

**David Marriott**  
David@CoreCommercial.co.uk  
**Neil Mason**  
Neil@CoreCommercial.co.uk

Core Commercial Limited, Unit 11 Offices, Dana Estate  
Transfesa Road, Paddock Wood, Kent TN12 6UT