

Business Unit To Let

CORE
COMMERCIAL
01892 834483



Unit F
Forstal Farm Business Park
Goudhurst Road

LAMBERHURST
Kent TN3 8AG

Location

The estate is located at the junction of the A21 with the A262 about 7 miles south east of Tunbridge Wells and 1 mile north east of Lamberhurst.

Description

A warehouse with lined profiled steel cladding. Toilet. Office. Electric roller shutter and separate pedestrian door. Power and lighting. Eaves height 10ft 6ins. Ample car parking.

Accommodation

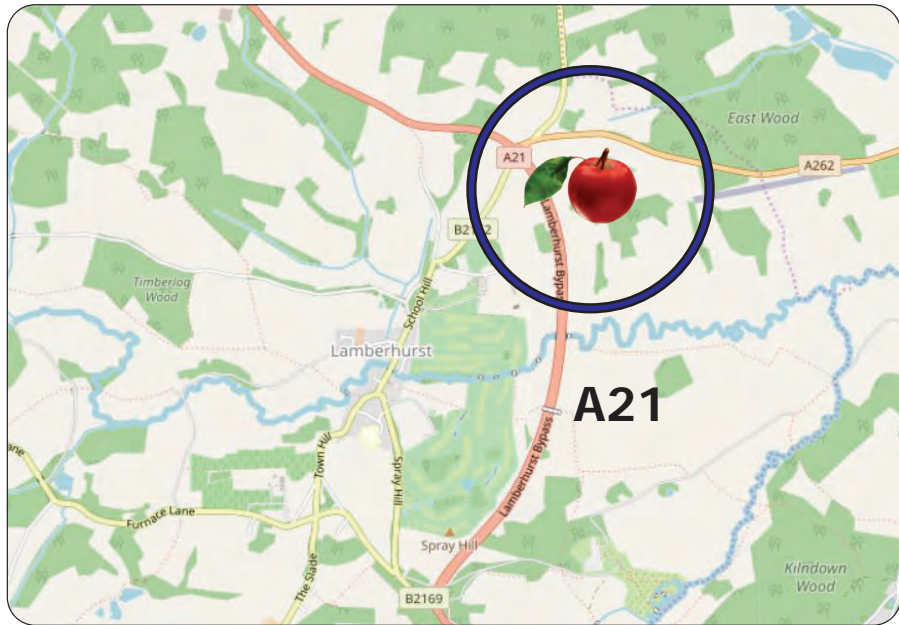
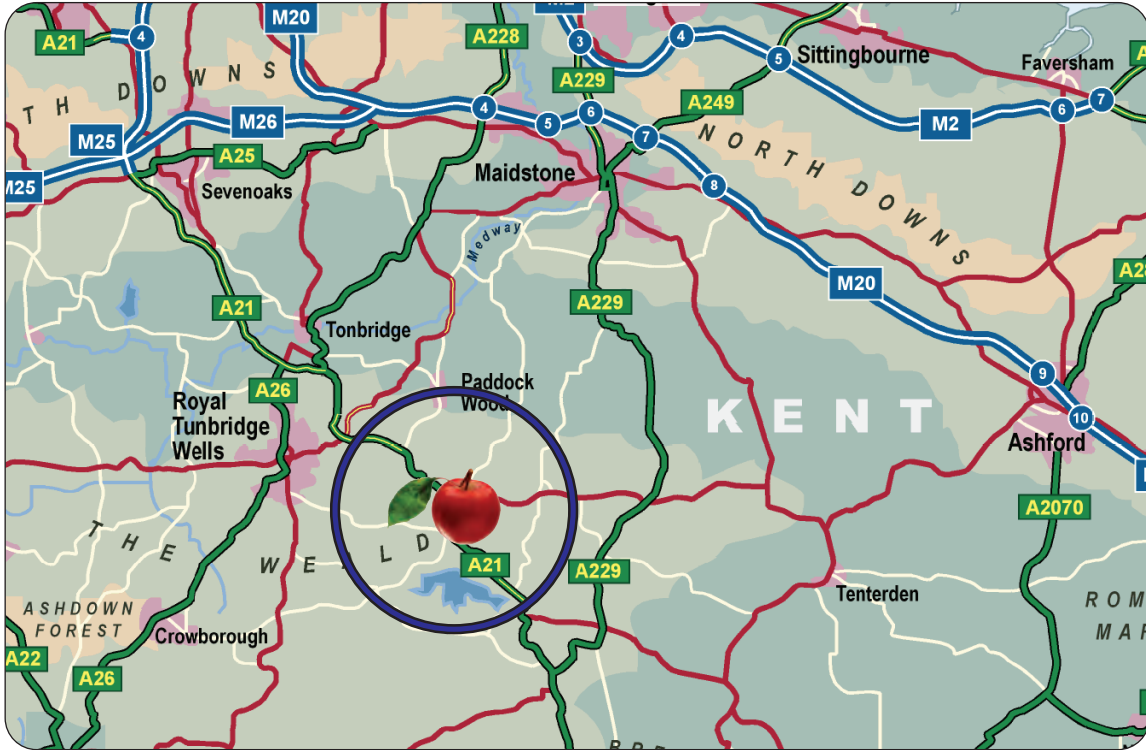
2,238 sqft

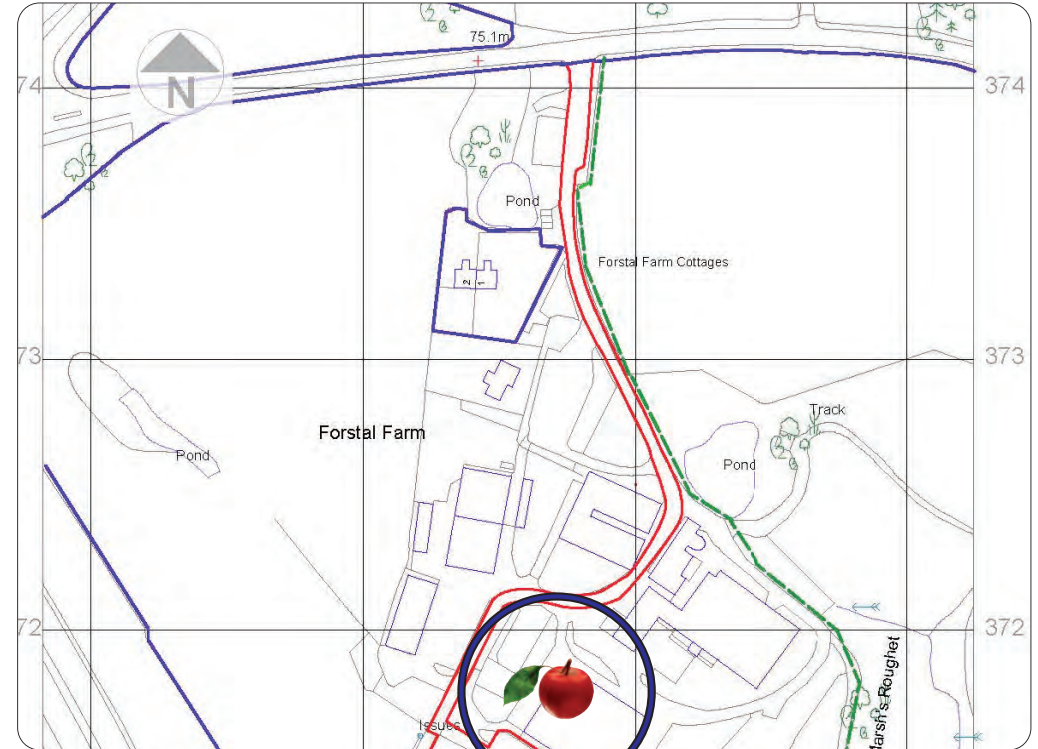
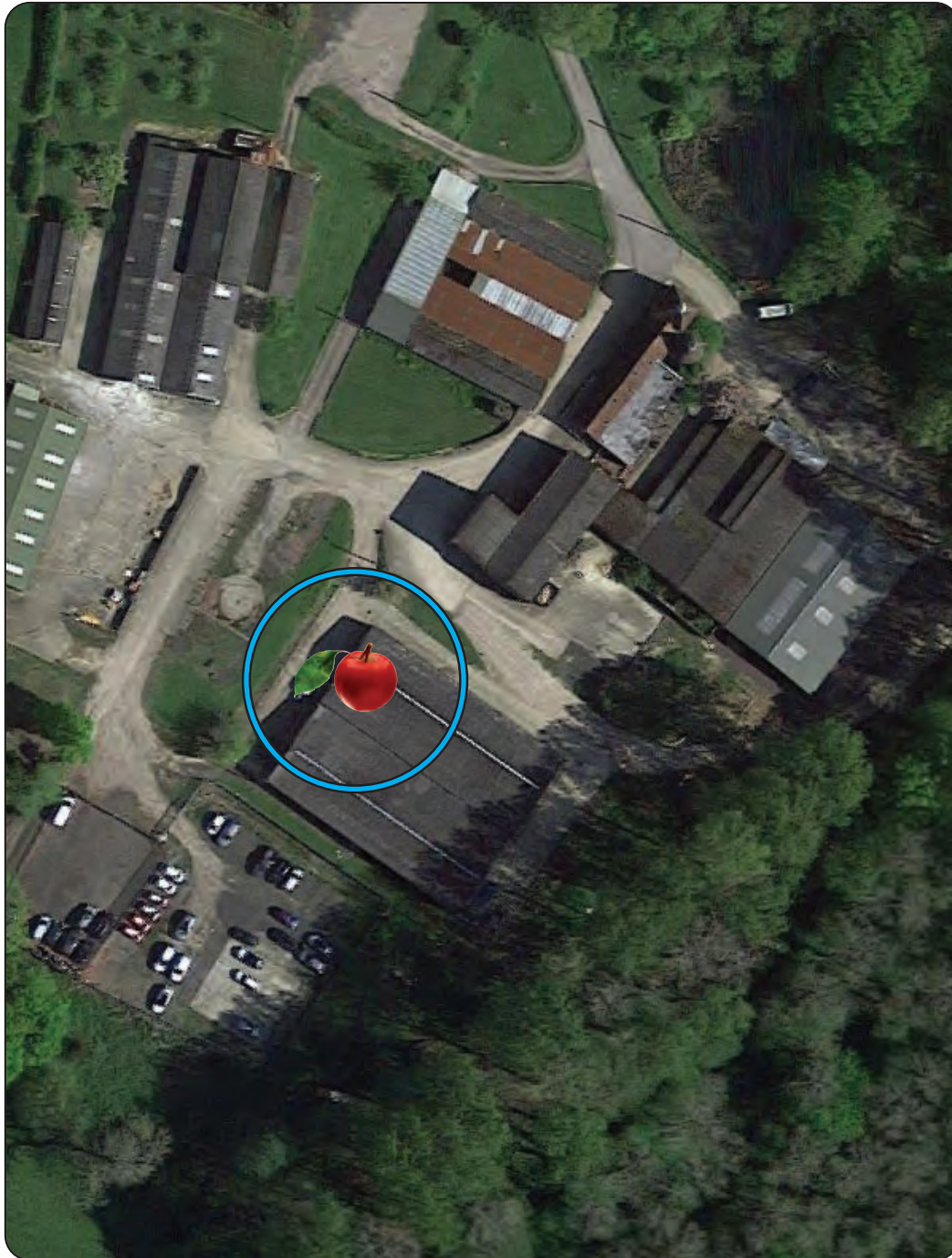
Terms

To Let at **£20,000** pa (£8.93 psf). **No VAT**. Business rates payable for 2024/25 is £7,485 (RV £15,000). A rent deposit will be required.

2,238 sqft








CORE
COMMERCIAL

01892 834483
www.CoreCommercial.co.uk

Or Contact our Joint Agents



Darrell Barber
darrell@bracketts.co.uk
01892 533733

Neil Mason
Neil@CoreCommercial.co.uk

David Marriott
David@CoreCommercial.co.uk

Core Commercial Limited, Webbs Court,
1 Buckhurst Avenue, Sevenoaks, Kent TN13 1LZ

These particulars are provided in good faith but do not form part of a contract. No statements are to be relied upon as statements of fact and parties intending To rely upon the information for any purpose whatsoever must satisfy themselves by inspection or otherwise as to the correctness of each statement.