

Warehouse / Workshop To Let



**1E Marley Business
Centre, Headcorn
Road, Smarden**

HEADCORN
Kent TN27 8PJ

Location

Headcorn is situated on the A247 southeast of Maidstone and west of Ashford. The property is located in a rural position on the Marley Farm estate due east of Headcorn.

Description

A mid terrace industrial/warehouse unit of concrete frame construction. New insulated folding door with pedestrian access. Lighting and 3 phase power. Eaves max: 18'4", min: 13'3". Asbestos cement roof covering. Easy access toilet and kitchen. Good parking. Ground Floor dimensions: 73'7" x 28'2".

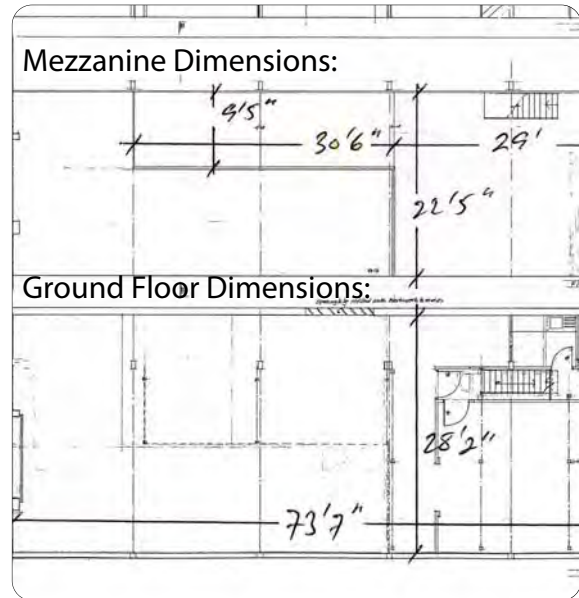
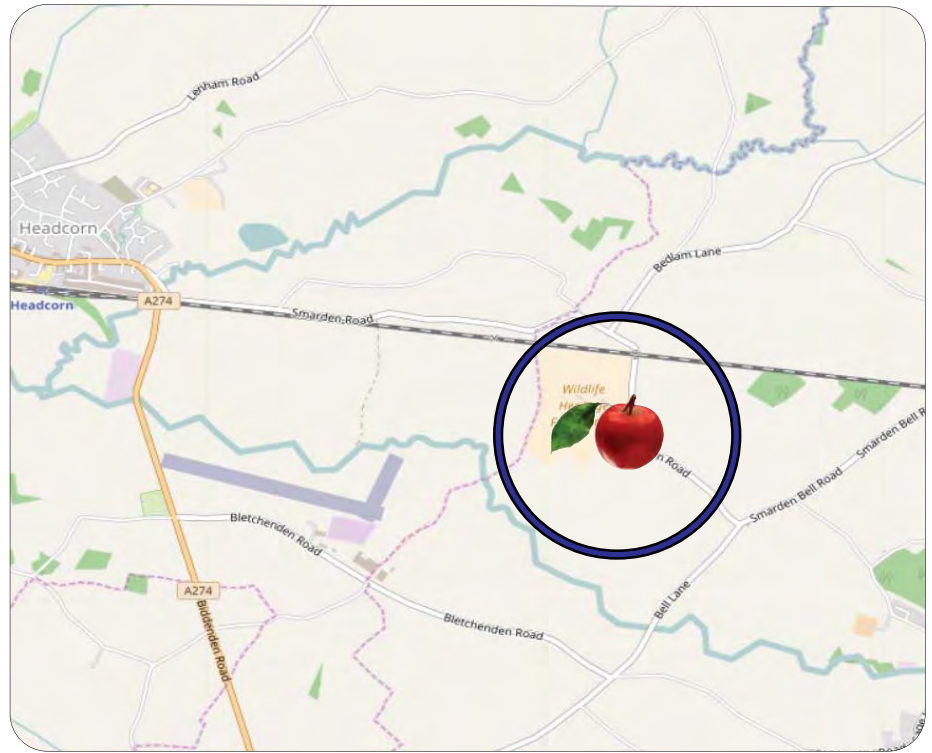
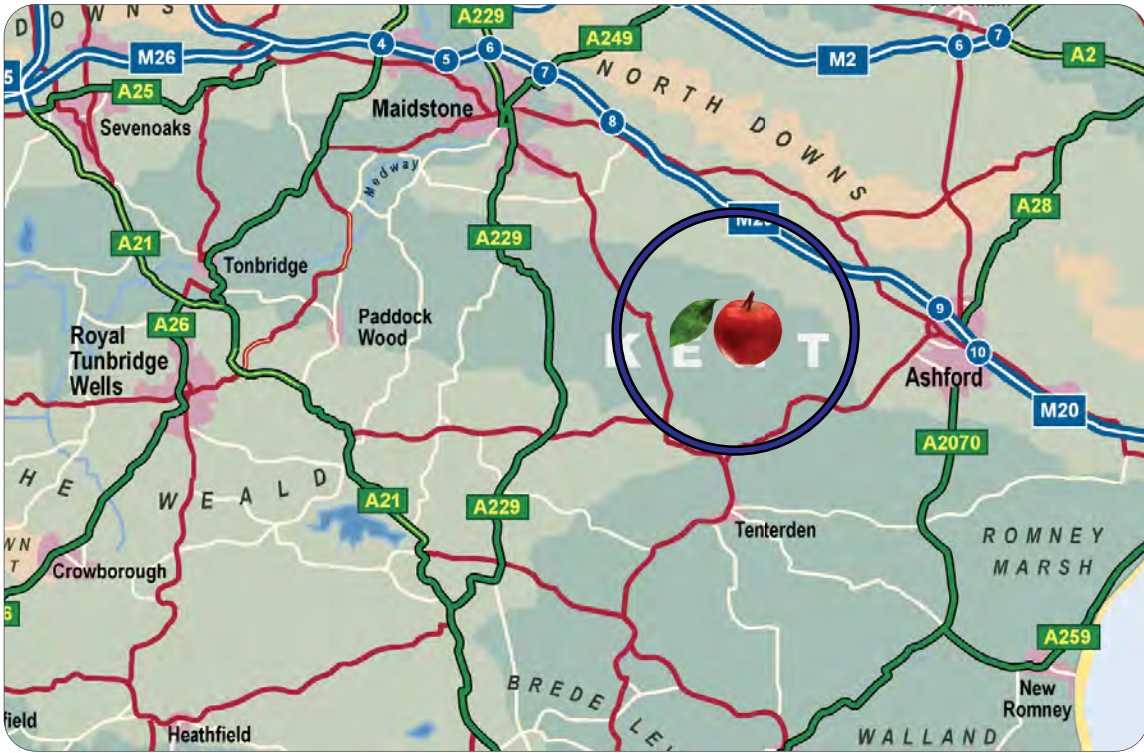
2,090 sqft
plus 890 sqft mezzanine

Terms

To Let at **£12,950** per annum plus VAT.
Rates Payable for 2017/18: £4,023 (Rateable Value: £8,400).



2,090 sqft



CORE
COMMERCIAL

01892 834483
www.CoreCommercial.co.uk

David Marriott
David@CoreCommercial.co.uk

Neil Mason
Neil@CoreCommercial.co.uk

Stephen Smith
Stephen@CoreCommercial.co.uk

Core Commercial Limited, Unit 11 Offices, Dana Estate
Transfesa Road, Paddock Wood, Kent TN12 6UT

These particulars are provided in good faith but do not form part of a contract. No statements are to be relied upon as statements of fact and parties intending to rely upon the information for any purpose whatsoever must satisfy themselves by inspection or otherwise as to the correctness of each statement.