

# Business unit To Let



**Unit 8, Crest Estate  
Pattenden Lane**

**MARDEN**  
Kent TN12 9QJ

## Location

Marden is situated 7 miles south of Maidstone and 10 miles north east of Tunbridge Wells. Situated on the established Pattenden Lane estate. Marden mainline railway station is nearby providing fast and frequent services to London and Ashford.

## Description

A basic industrial warehouse unit. Roller shutter door. Toilet. Washroom. 18'6 eaves height. 3 phase power. Good car parking. Secure estate.

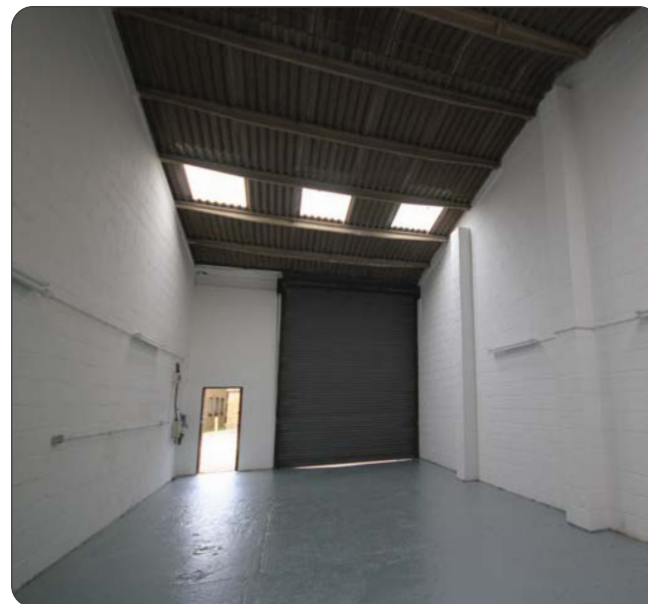
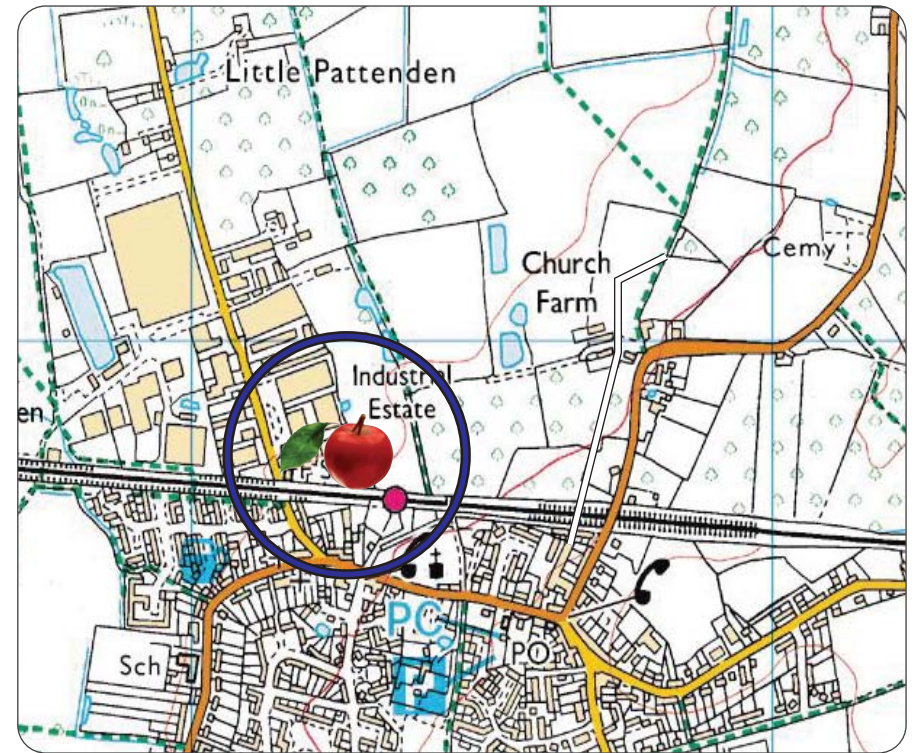
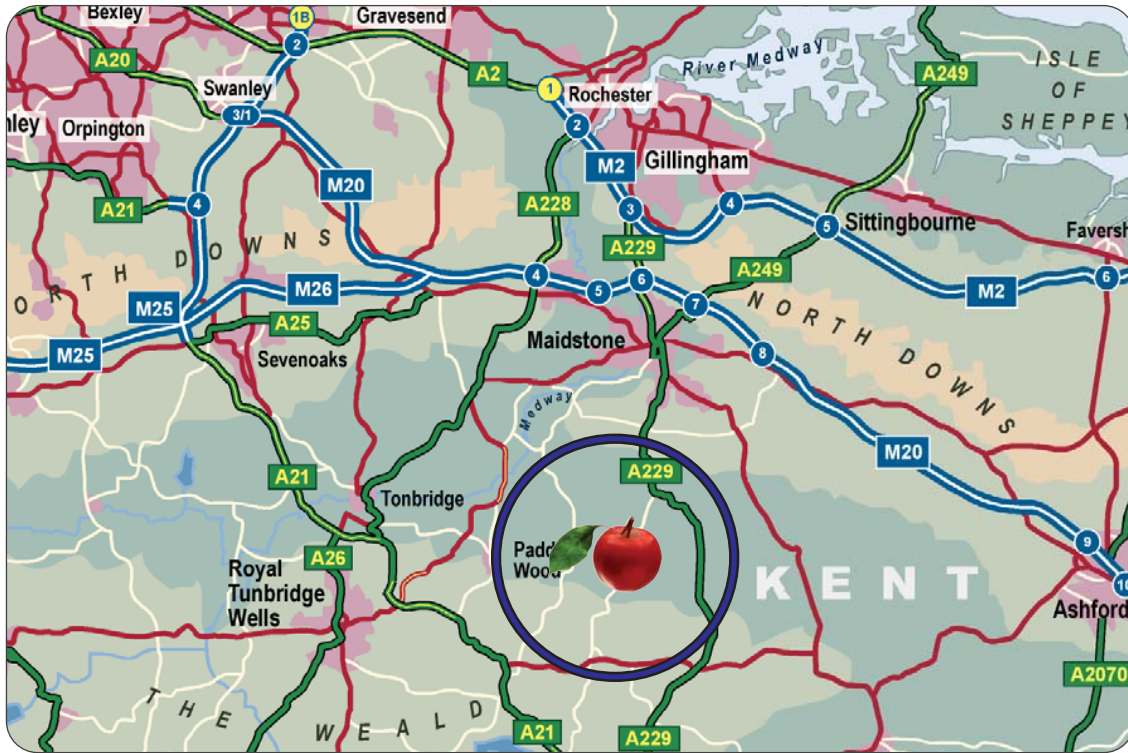
**930 sqft**

## Terms

To let at **£8,000** pa NO VAT, subject to contract. Rates payable 2018/19 £2,958 (Rateable £6,000) **Eligible for small business rates relief.**



**930 sqft**




**CORE**  
 COMMERCIAL  
**01892 834483**  
[www.CoreCommercial.co.uk](http://www.CoreCommercial.co.uk)

**David Marriott**  
 David@CoreCommercial.co.uk  
**Neil Mason**  
 Neil@CoreCommercial.co.uk

These particulars are provided in good faith but do not form part of a contract. No statements are to be relied upon as statements of fact and parties intending to rely upon the information for any purpose whatsoever must satisfy themselves by inspection or otherwise as to the correctness of each statement.

Core Commercial Limited, Unit 11 Offices, Dana Estate  
 Transfesa Road, Paddock Wood, Kent TN12 6UT