

Warehouse/Trade Unit To Let or May Sell

CORE
COMMERCIAL
01892 834483



1-4 Chapman Way

TUNBRIDGE WELLS

Kent TN2 3EF

Location

Tunbridge Wells lies about 35 miles south of London, 12 miles south of junction 5 of the M25 on the A21. The property is located on the High Brooms Estate 1.2 miles to the A21.

Description

A high quality detached warehouse/trade unit with profile steel cladding with roof lights. Fully fenced and gated site. 18ft eaves. 3 phase power. Electric up and over loading door. Integral air conditioned offices/showroom at first floor. Kitchen and 2 toilets. Double glazed windows to front at first floor. Intruder and fire alarm. Large yard, car parking and loading area.

Ground	5,990
First Office/showroom	2,175
Total	8,165 sqft

Additional mezzanine
(Can be removed if required) 862 sqft

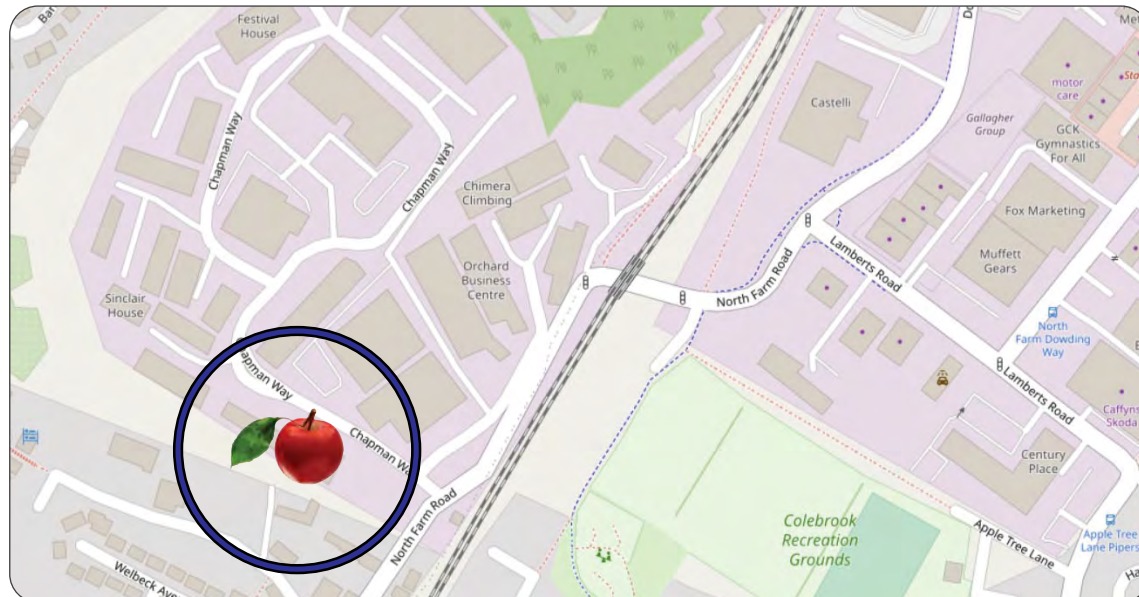
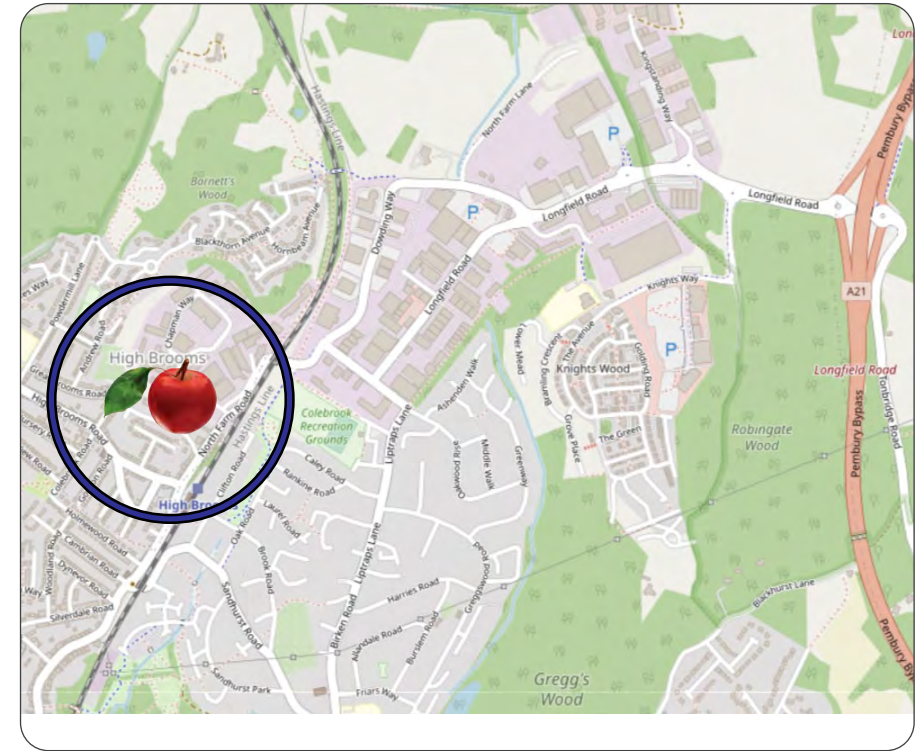
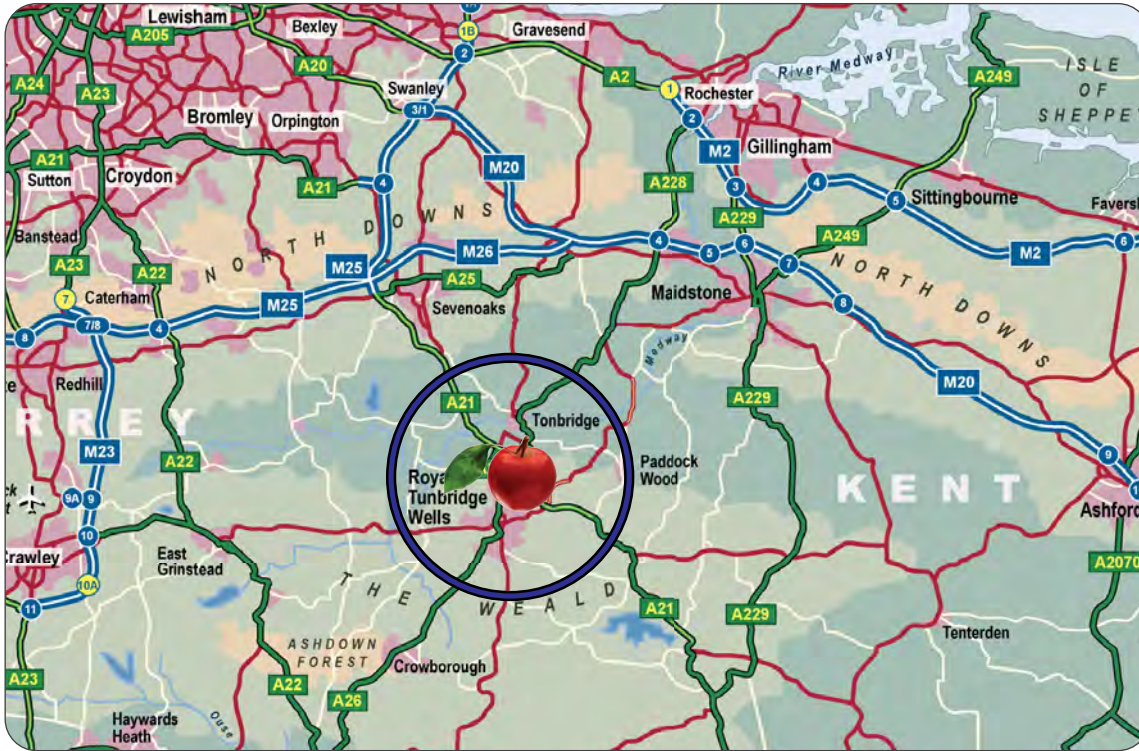
Terms

To Let at **£80,000** pa (£9.80 psf) plus VAT subject to contract. May sell freehold. Business rates payable year 2024/25: £45,591 (Rateable Value £83,500).

Archive Photo

8,165 sqft





These particulars are provided in good faith but do not form part of a contract. No statements are to be relied upon as statements of fact and parties intending To rely upon the information for any purpose whatsoever must satisfy themselves by inspection or otherwise as to the correctness of each statement.



CORE
COMMERCIAL
01892 834483
www.CoreCommercial.co.uk

Neil Mason
Neil@CoreCommercial.co.uk

David Marriott
David@CoreCommercial.co.uk

Core Commercial Limited, Nettlestead House,
Maidstone Road, Paddock Wood, Kent TN12 6DA
and 6 Kevington Close, Orpington, Kent BR5 2NX



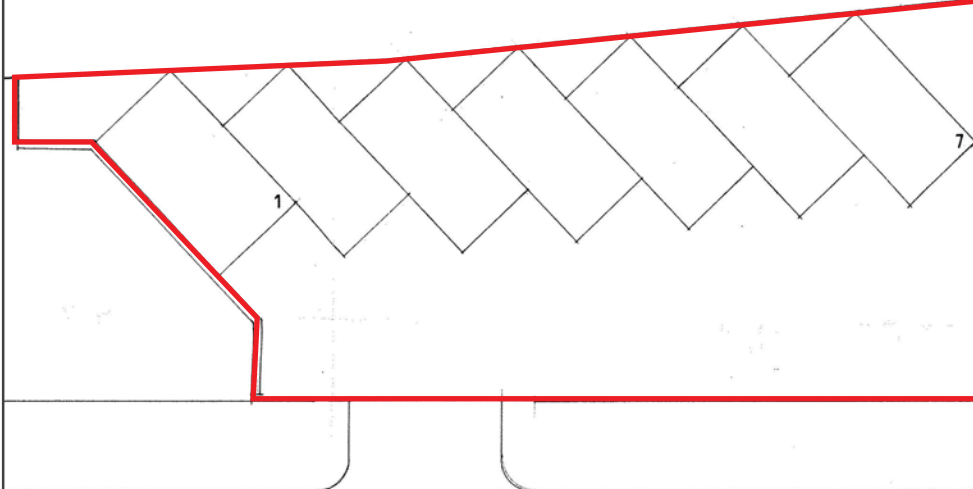
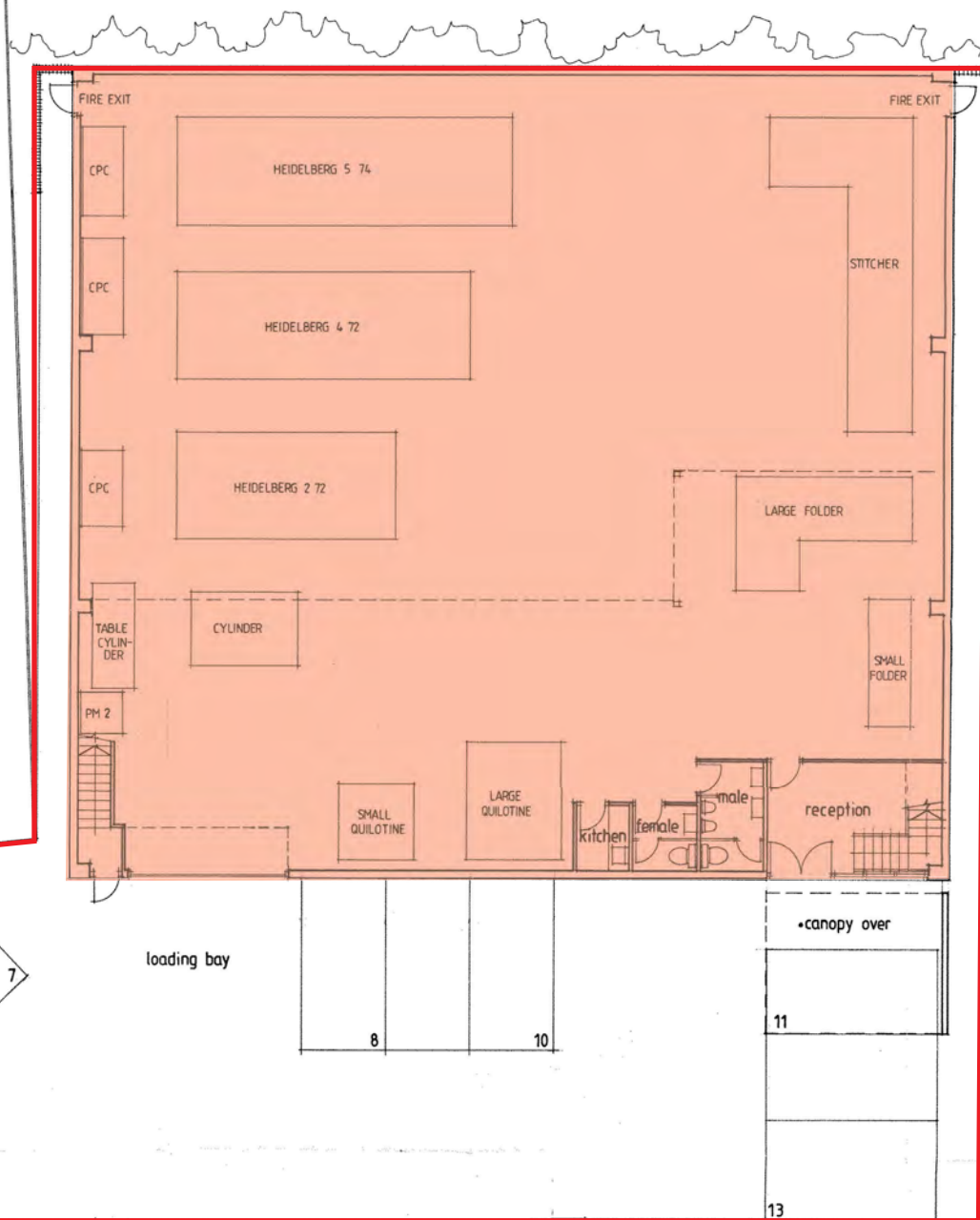
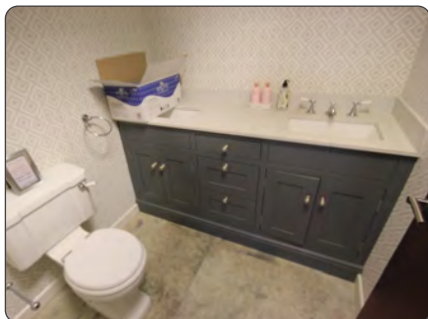
Archive Photo



Archive Photo



Archive Photo



Chapman Way