

Business Unit To Let



Unit C, 33-37 Second Avenue
Luton

CHATHAM
Kent ME4 5AY

Location

Situated about 3.5 miles to junction 3 of M2 motorway, 1.5 miles to the east of Chatham town centre.

Description

The building is of brick and clear-span steel truss roof construction. Lined roof with 10% roof lights. Sodium lights. Electric roller shutter door. 24'4 x 110'3. 3 phase power. 5 ton crane. Street parking.

Workshop 2,345
Office 90

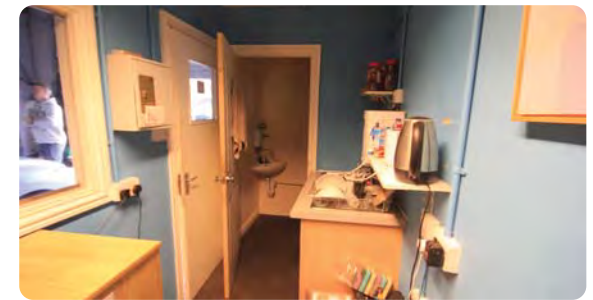
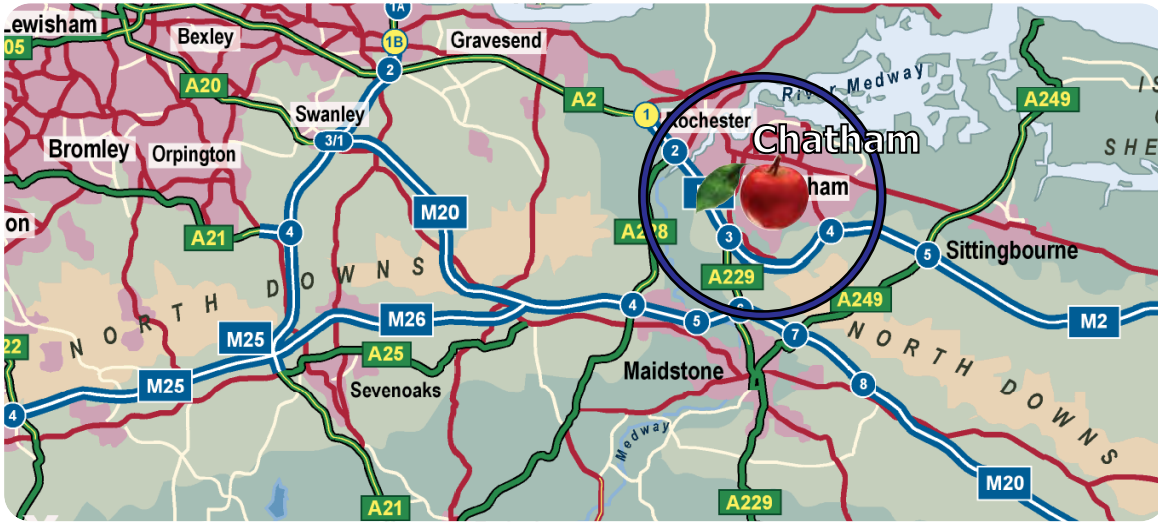
2,438 sqft

Terms

To Let at **£18,000**, plus vat. Eligible Small Business Rates Relief.



2,438 sqft




CORE
COMMERCIAL
01892 834483
www.CoreCommercial.co.uk

David Marriott
 David@CoreCommercial.co.uk

Neil Mason
 Neil@CoreCommercial.co.uk

Core Commercial Limited, Unit 11 Offices, Dana Estate
 Transfesa Road, Paddock Wood, Kent TN12 6UT

These particulars are provided in good faith but do not form part of a contract. No statements are to be relied upon as statements of fact and parties intending to rely upon the information for any purpose whatsoever must satisfy themselves by inspection or otherwise as to the correctness of each statement.