

# Stores & Offices To Let

**CORE**  
COMMERCIAL  
01892 834483



**Unit A1 GF, Horsted  
Keynes Business Park  
Cinder Hill**

**HORSTED KEYNES**  
**West Sussex RH17 7BA**

## Location

Situated about 1 mile north of Horsted Keynes, 6.5 miles south of East Grinstead, 6 miles north of Haywards Heath and 13 miles from Gatwick Airport. The Business Park is a 35,000 sq ft complex of buildings on a 4.5 acre campus in an area of outstanding natural beauty.

## Description

Self Contained unit with Storage / Office / kitchen / Toilets on ground mezzanine. Ground level entrance with siding goods door. Led lighting, Heating to offices, Recently decorated and carpeted. Fibre broadband included in rent. Ample Parking.

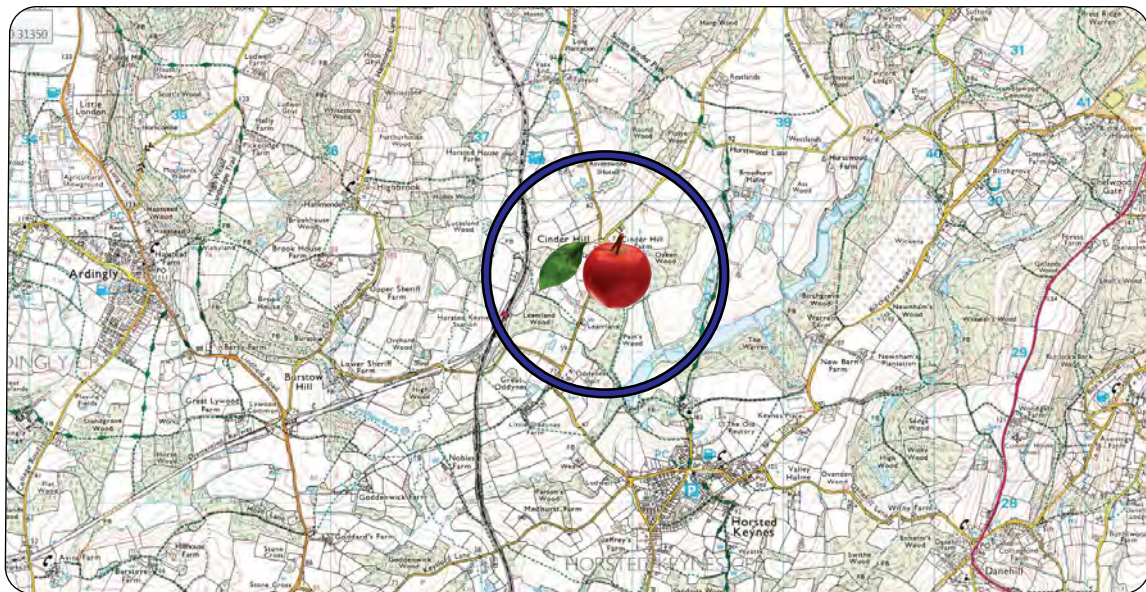
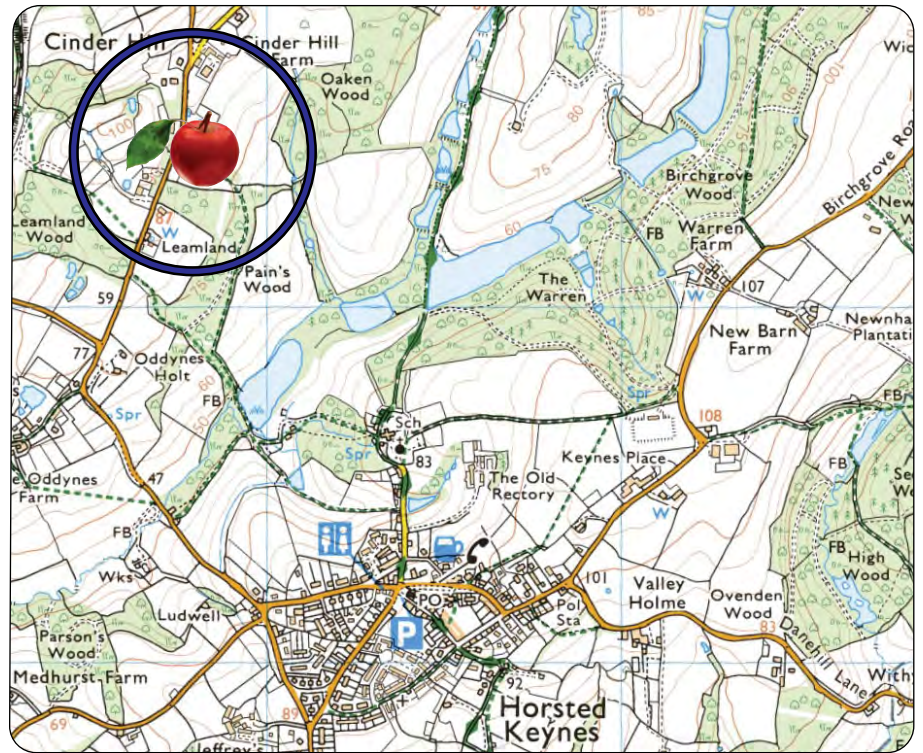
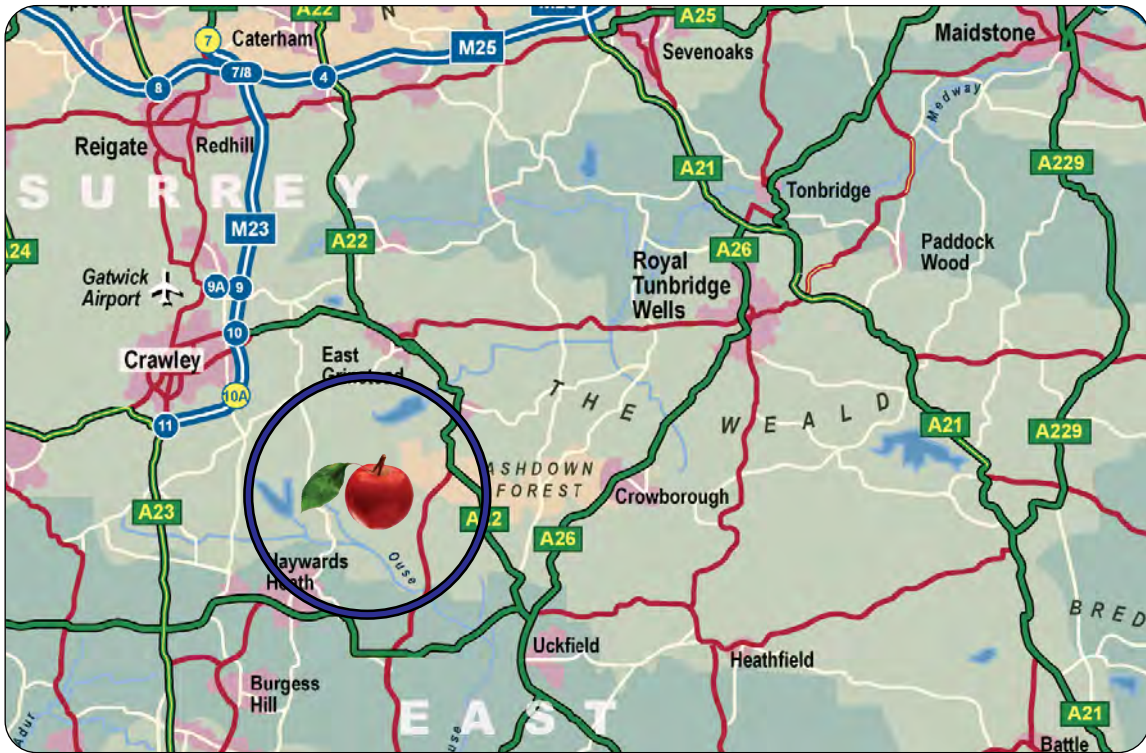
Ground Store	810	
Office	238	1,048
Mezz		<u>387</u>
		<b>1,435 sqft</b>

## Terms

To let on flexible lease where owner is responsible for main repairs. **£9,600 pa**, (£6.70 psf) inclusive of services. plus vat. Probably no business rates if this will be your sole property.

**1,435 sqft**






**CORE**  
 COMMERCIAL  
**01892 834483**  
[www.CoreCommercial.co.uk](http://www.CoreCommercial.co.uk)

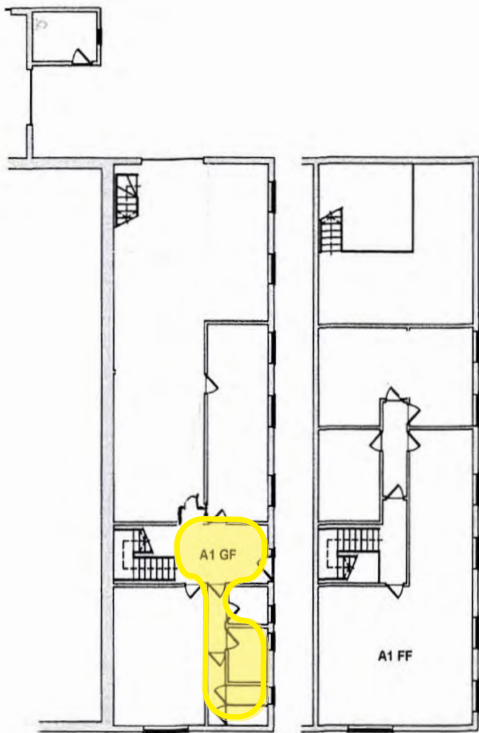
**Neil Mason**  
[Neil@CoreCommercial.co.uk](mailto:Neil@CoreCommercial.co.uk)

**David Marriott**  
[David@CoreCommercial.co.uk](mailto:David@CoreCommercial.co.uk)

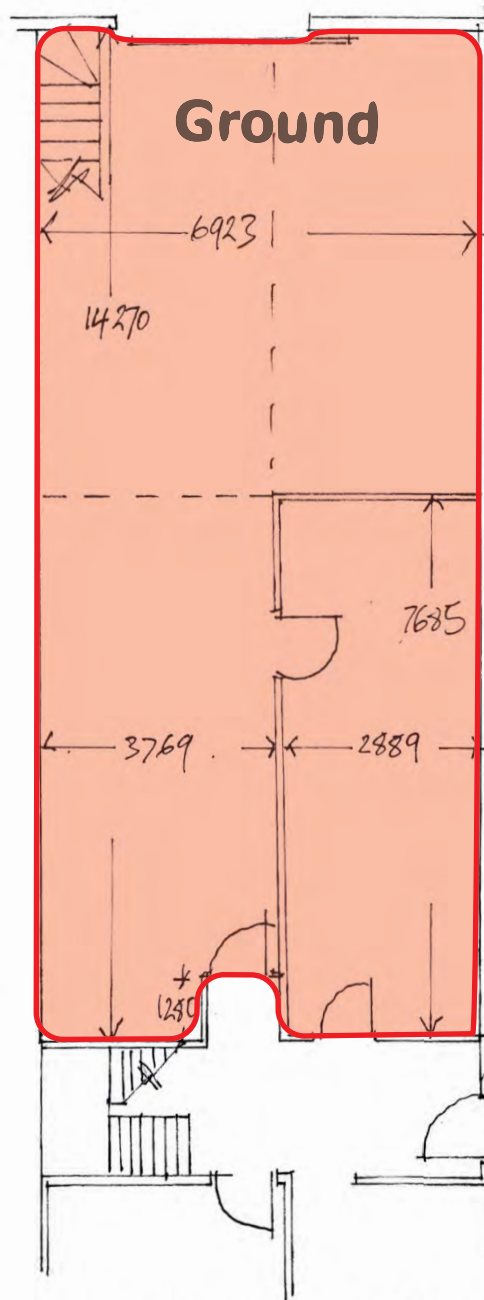
These particulars are provided in good faith but do not form part of a contract. No statements are to be relied upon as statements of fact and parties intending to rely upon the information for any purpose whatsoever must satisfy themselves by inspection or otherwise as to the correctness of each statement.

Core Commercial Limited, Nettlestead House,  
 Maidstone Road, Paddock Wood, Kent TN12 6DA  
 and 6 Kevington Close, Orpington, Kent BR5 2NX

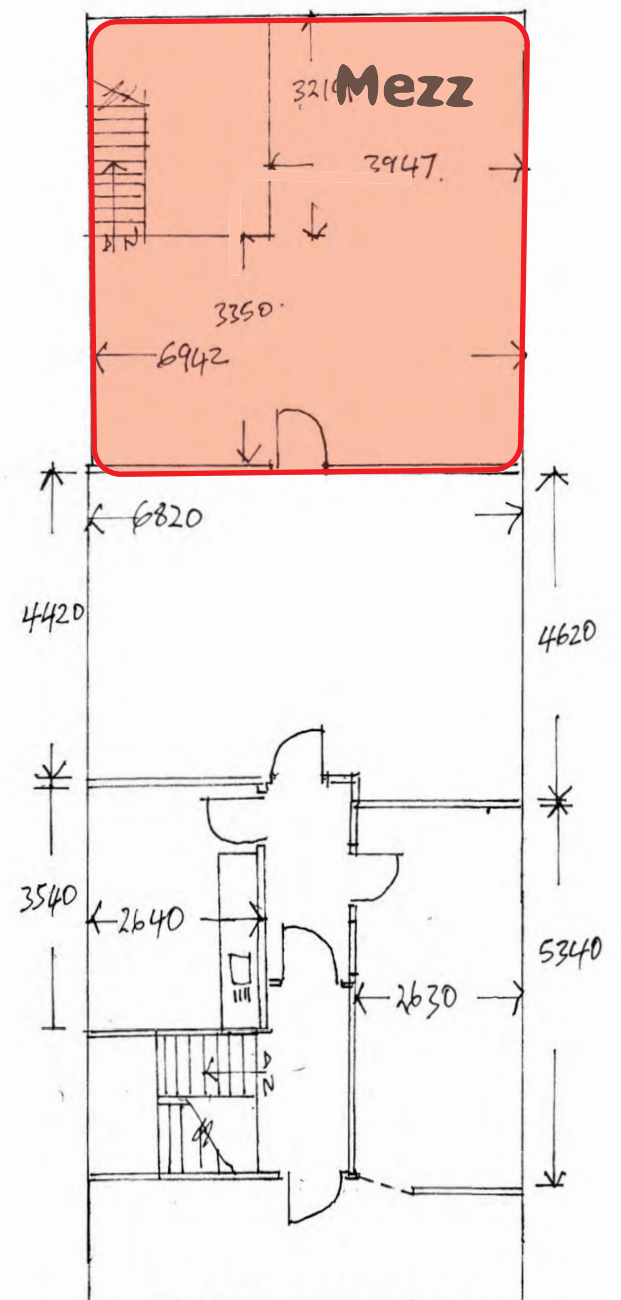




PART BUILDING A1  
 HORSTED KEYNES BUSINESS  
 PARK RH17 7BA  
 scale 1:100 approx



GROUND FLOOR



FIRST FLOOR



