

Business Unit To Let



**Unit 9 Stadium Business Park
Castle Road
Eurolink Estate**

**SITTINGBOURNE
Kent ME10 3BG**

Location

Situated on the established Eurolink Estate on Castle Road at the junction with Gas Road and Stadium Way. Excellent access to the A249 (and M2) via Northern Relief Road.

Description

Clear span steel portal frame, 19'2" eaves height, plastisol insulated roof, brick elevations, sectional access door, integral offices, double glazed windows, office and warehouse lighting, concrete loading areas and block paviour parking.

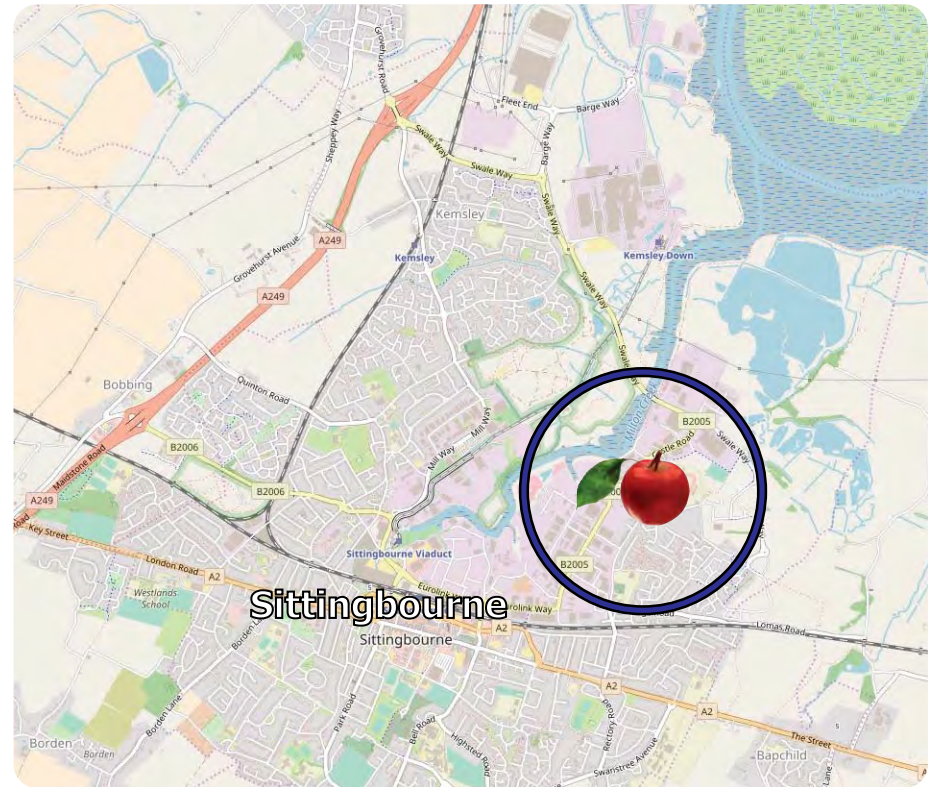
Ground Floor	3,076
First Office	627
Total	3,703 sqft

Terms

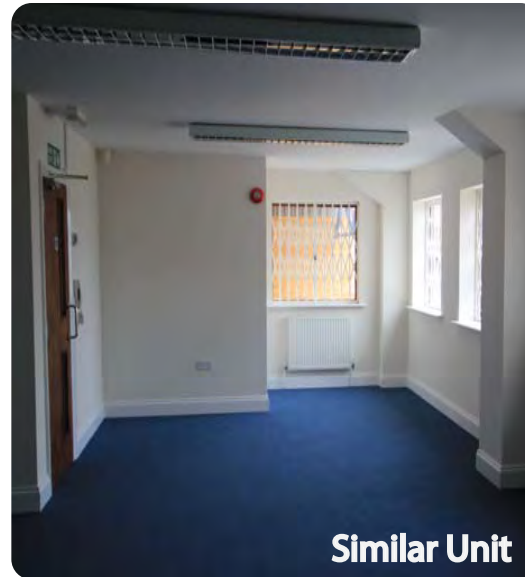
To Let at **£27,500** pa (£7.43 per sqft) plus VAT. Business Rates payable for 2022/23 £11,477, (Rateable Value £23,000).



3,703 sqft



Archive photo



Similar Unit

CORE
COMMERCIAL
01892 834483
www.CoreCommercial.co.uk

Neil Mason
Neil@CoreCommercial.co.uk
David Marriott
David@CoreCommercial.co.uk

These particulars are provided in good faith but do not form part of a contract. No statements are to be relied upon as statements of fact and parties intending to rely upon the information for any purpose whatsoever must satisfy themselves by inspection or otherwise as to the correctness of each statement.

Core Commercial Limited, Unit 11 Offices, Dana Estate
Transfesa Road, Paddock Wood, Kent TN12 6UT