

# Workshop & office/showroom To Let



**Parsonage Farm  
Heath Road  
Boughton Monchelsea**

**MAIDSTONE**

**Kent ME17 4JB**

## Location

Situated 4 miles south of Maidstone on the B2163 between Parkwood and Coxheath

## Description

A detached fitted joinery workshop with roller shutter door. Adjoining office / showroom. Eaves height 16'9 peak of 22'. Sodium lights. Compressed air lines. Toilets and kitchenette. Insulated roof with roof lights. Excellent car parking.

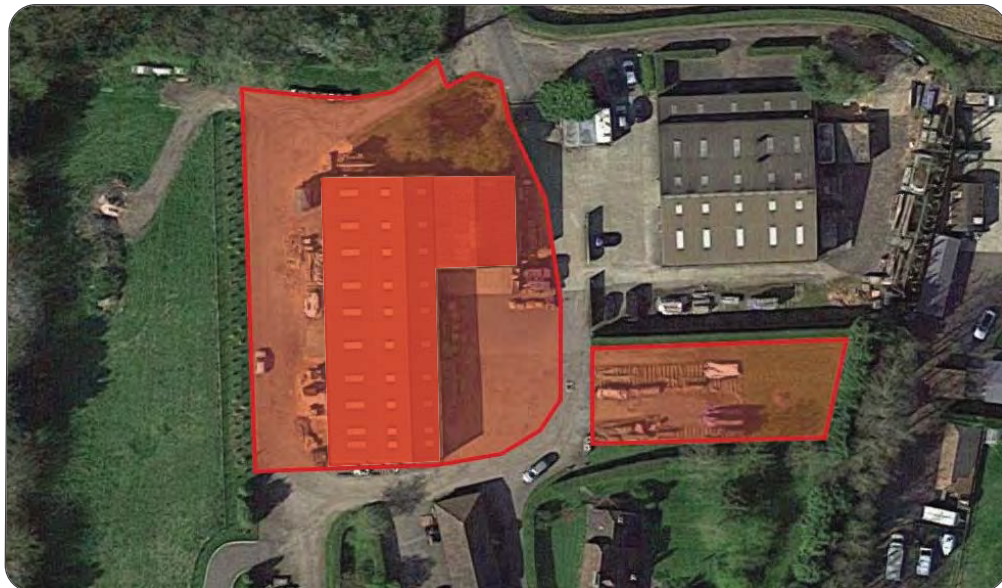
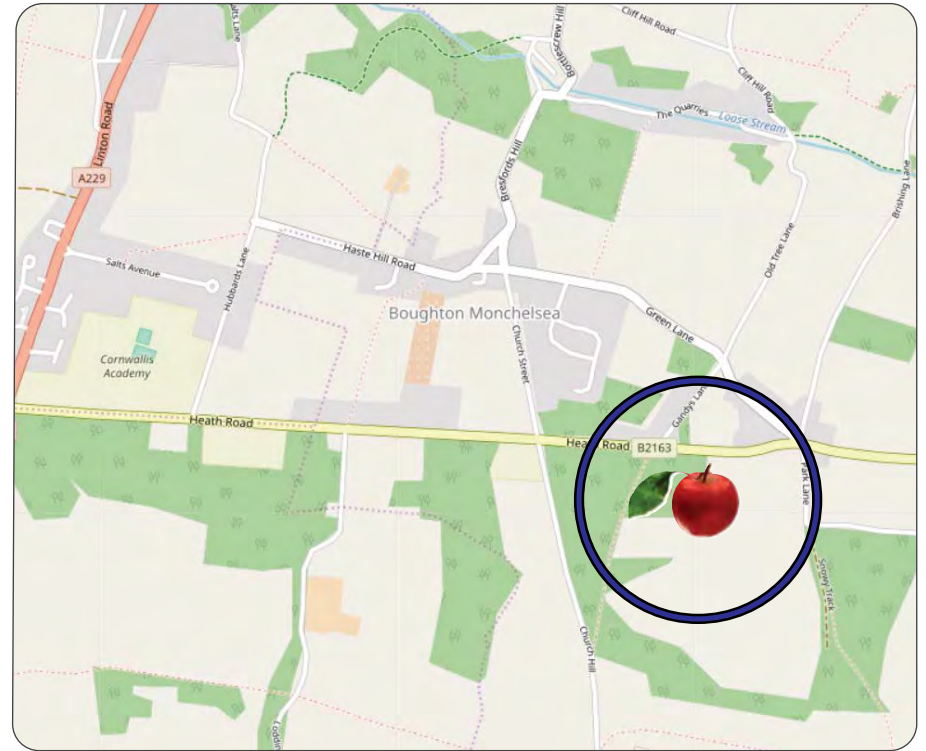
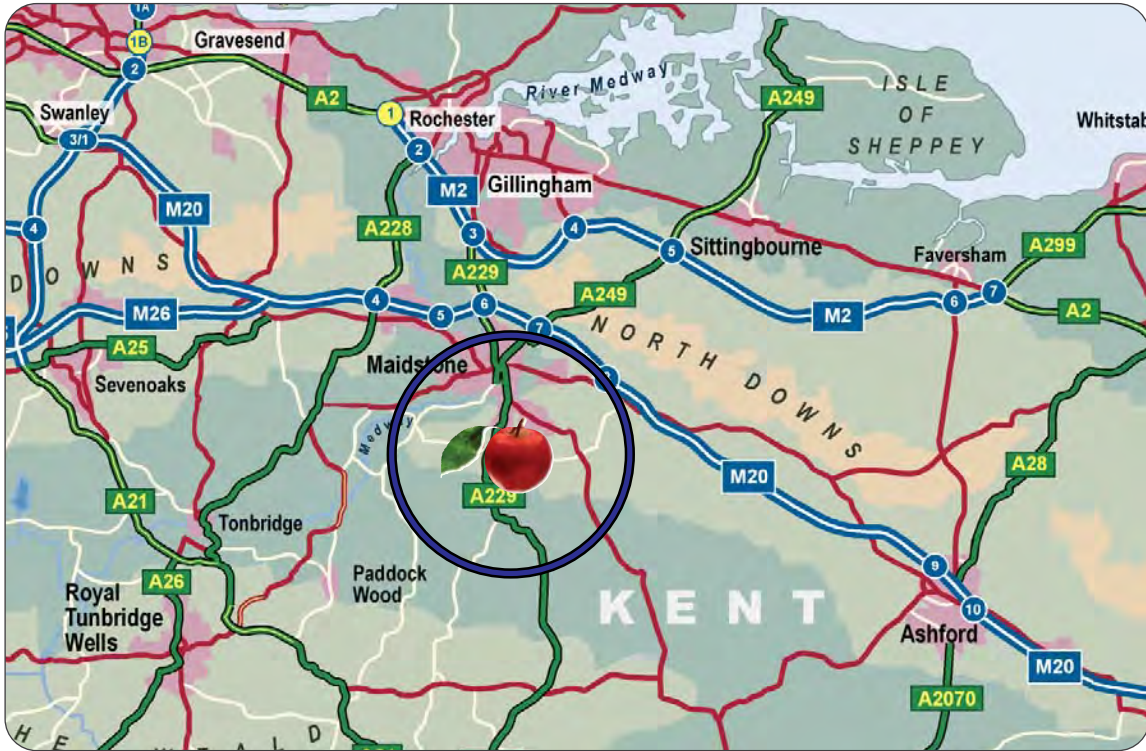
Workshop	7,768
Office/showroom	671
Open sided storage	<u>1,028</u>
	<b>9,467 sqft</b>

## Terms

To let at **£57,500** per annum (£6.07 psf). Rates payable 2018/19 £16,762 pa (Rateable Value £34,000).

**9,500 sqft**






**CORE**  
 COMMERCIAL  
**01892 834483**  
[www.CoreCommercial.co.uk](http://www.CoreCommercial.co.uk)

David Marriott  
 David@CoreCommercial.co.uk  
 Neil Mason  
 Neil@CoreCommercial.co.uk

These particulars are provided in good faith but do not form part of a contract. No statements are to be relied upon as statements of fact and parties intending to rely upon the information for any purpose whatsoever must satisfy themselves by inspection or otherwise as to the correctness of each statement.

Core Commercial Limited, Unit 11 Offices, Dana Estate  
 Transfesa Road, Paddock Wood, Kent TN12 6UT



**CORE**  
COMMERCIAL  
**01892 834483**  
[www.CoreCommercial.co.uk](http://www.CoreCommercial.co.uk)

David Marriott  
David@CoreCommercial.co.uk  
Neil Mason  
Neil@CoreCommercial.co.uk

These particulars are provided in good faith but do not form part of a contract. No statements are to be relied upon as statements of fact and parties intending to rely upon the information for any purpose whatsoever must satisfy themselves by inspection or otherwise as to the correctness of each statement.

Core Commercial Limited, Unit 11 Offices, Dana Estate  
Transfesa Road, Paddock Wood, Kent TN12 6UT