

High Bay Warehouse To Let



Unit G, Phase II Integra
Bircholt Road

MAIDSTONE

Kent ME15 9YY

Location

Maidstone is the county town of Kent 35 miles Southeast of London. The property is situated on Bircholt Road off the A274 Sutton Road southeast of Maidstone town centre.

The unit adjoins unit F, a 56,000 sqft warehouse and trade counter let to Grafton Group's Nationwide Drywall & Insulation subsidiary.

Description

A clear span steel portal framed warehouse:
Shell finish
Eaves height 30'2" (9.2m)
Peak 37'6" (11.4m)
3 phase power
B1, B2 and B8 uses
24 hour use
Secure yard of 15,000 sqft

Ground floor area **15,700 sqft**
(1,459 sq m)

Terms

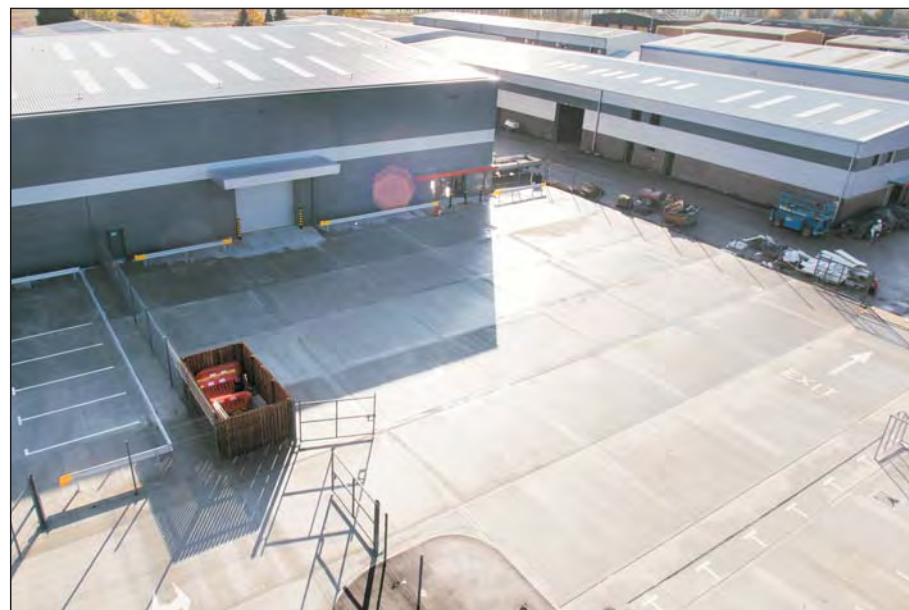
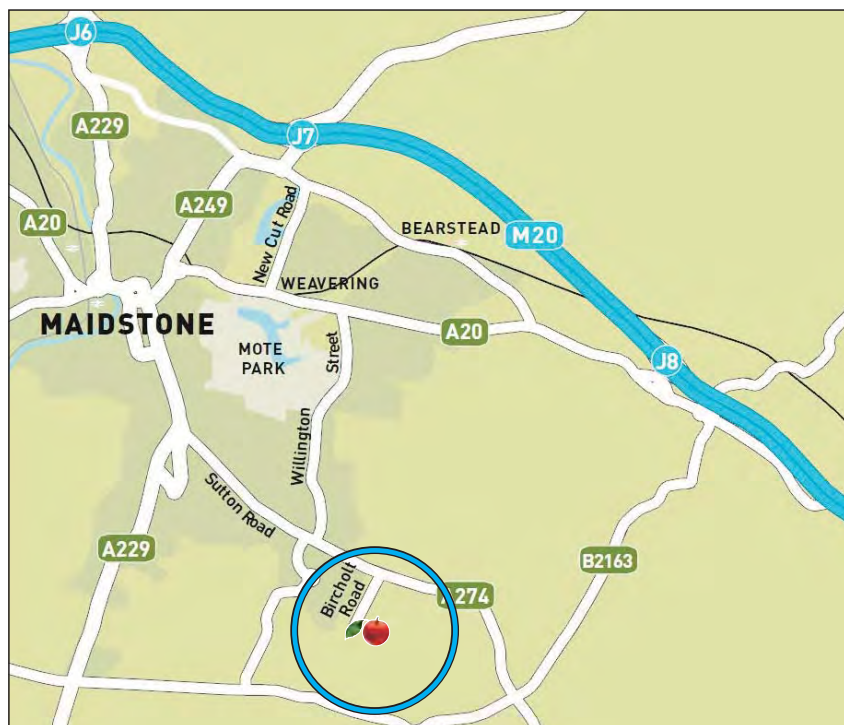
The unit is to let on a new lease at **£6.50** per sqft plus vat, subject to contract



15,700 sqft



CORE COMMERCIAL



**BNP PARIBAS
REAL ESTATE**

020 7338 4000
realestate.bnpparibas.co.uk

Jonjo Lyles
jonjo.lyles@bnpparibas.com

 **CORE
COMMERCIAL**

01892 834483
www.CoreCommercial.co.uk

David Marriott
David@CoreCommercial.co.uk
Neil Mason
Neil@CoreCommercial.co.uk
Stephen Smith
Stephen@CoreCommercial.co.uk

Core Commercial Limited, Maidstone Road, Paddock Wood, Kent TN12 6DA
Fax: 01892 833921 Mail@CoreCommercial.co.uk www.CoreCommercial.co.uk

These particulars are provided in good faith but do not form part of a contract. No statements are to be relied upon as statements of fact and parties intending to rely upon the information for any purpose whatsoever must satisfy themselves by inspection or otherwise as to the correctness of each statement