

Business Unit To Let



CORE COMMERCIAL

20 Integra ME
Bircholt Road

MAIDSTONE
Kent ME15 9GQ

Location

Maidstone is situated about 45 miles south of London. The property lies to the southeast of the town on the established Parkwood estate. Good access to the M20 motorway.

Description

Modern business unit with B1, B2 and B8 uses. Unrestricted hours of use. Integral office with kitchen. Disabled toilet. 3 phase power, water and mains gas. Sectional access doors. Clear height 22'3". 4 dedicated parking spaces plus communal.

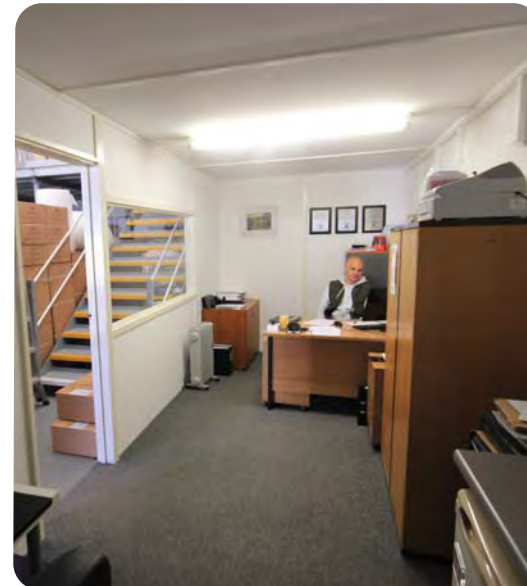
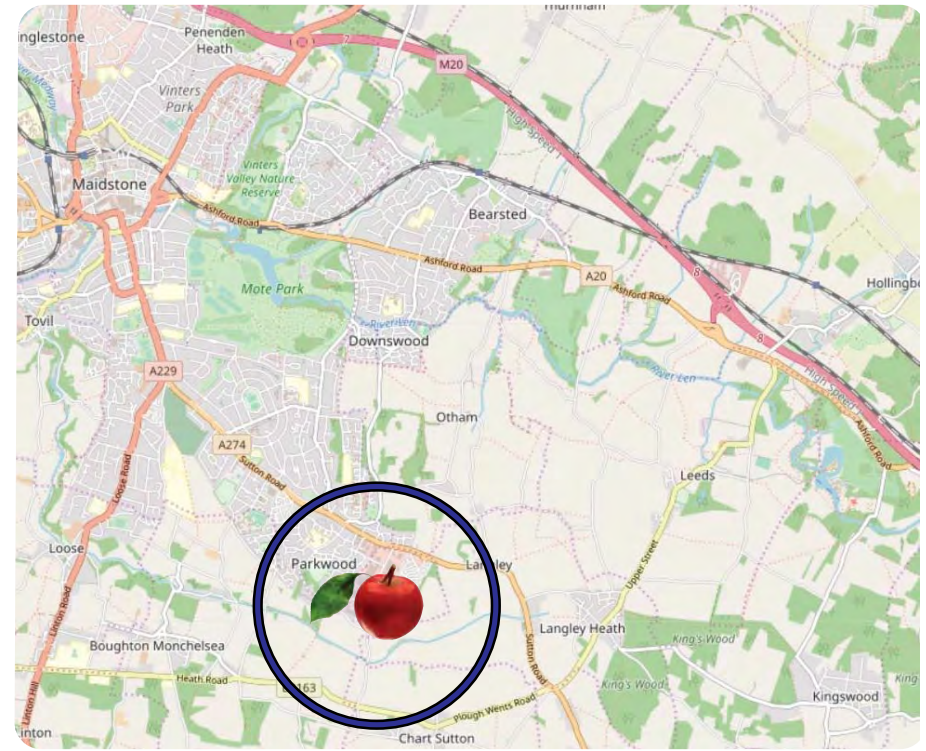
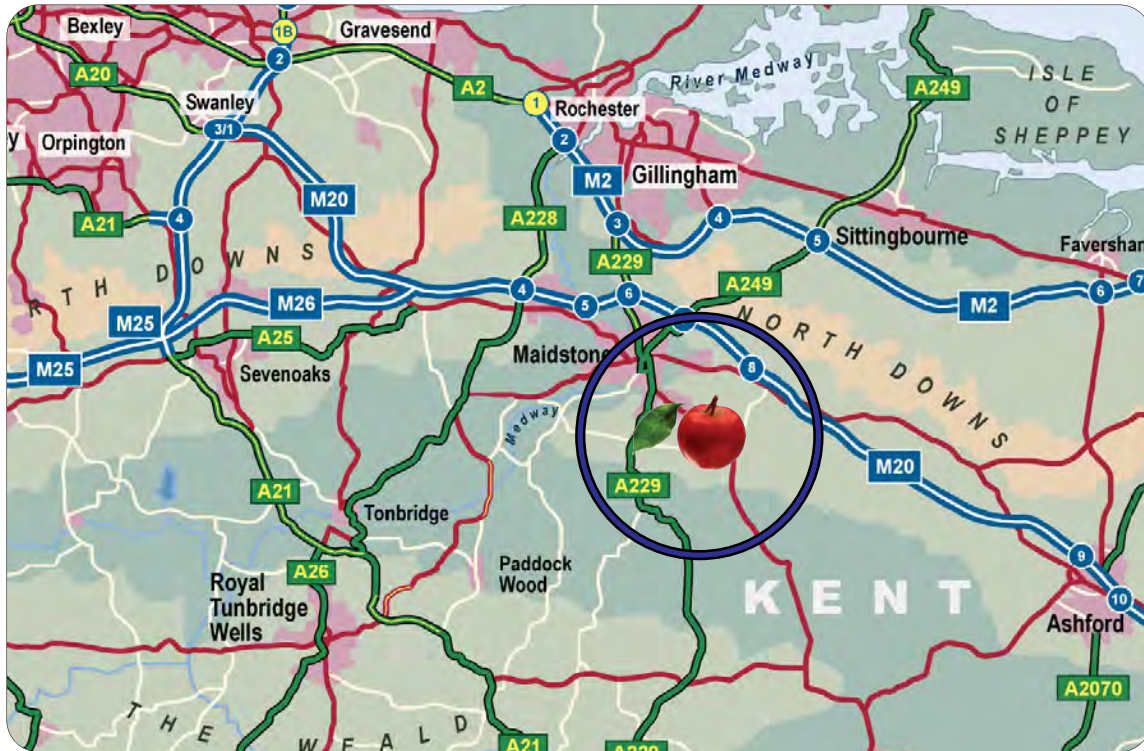
Warehouse	1,564
Office	176
	1,740 sqft

Mezzanine deck	470 sqft
----------------	----------

Terms

To let at **£15,000 pa** plus vat.
Eligible Small Business Rates Relief.
Rates payable £3,180 pa if this is your sole property (otherwise £6,360) for 2018/19 (Rateable Value £13,250)

1,740 sqft




CORE
COMMERCIAL
01892 834483
www.CoreCommercial.co.uk

David Marriott
 David@CoreCommercial.co.uk
Neil Mason
 Neil@CoreCommercial.co.uk

These particulars are provided in good faith but do not form part of a contract. No statements are to be relied upon as statements of fact and parties intending to rely upon the information for any purpose whatsoever must satisfy themselves by inspection or otherwise as to the correctness of each statement.

Core Commercial Limited, Unit 11 Offices, Dana Estate
Transfesa Road, Paddock Wood, Kent TN12 6UT