

# Warehouse / Factory To Let or may sell



Brunswick Road

## ASHFORD

Kent TN23 1EH

### Location

Ashford is situated approx 56 miles south-east of central London. The property is about 1 mile from junction 9 of the M20 motorway, Ashford town centre and the International Railway Station.

### Description

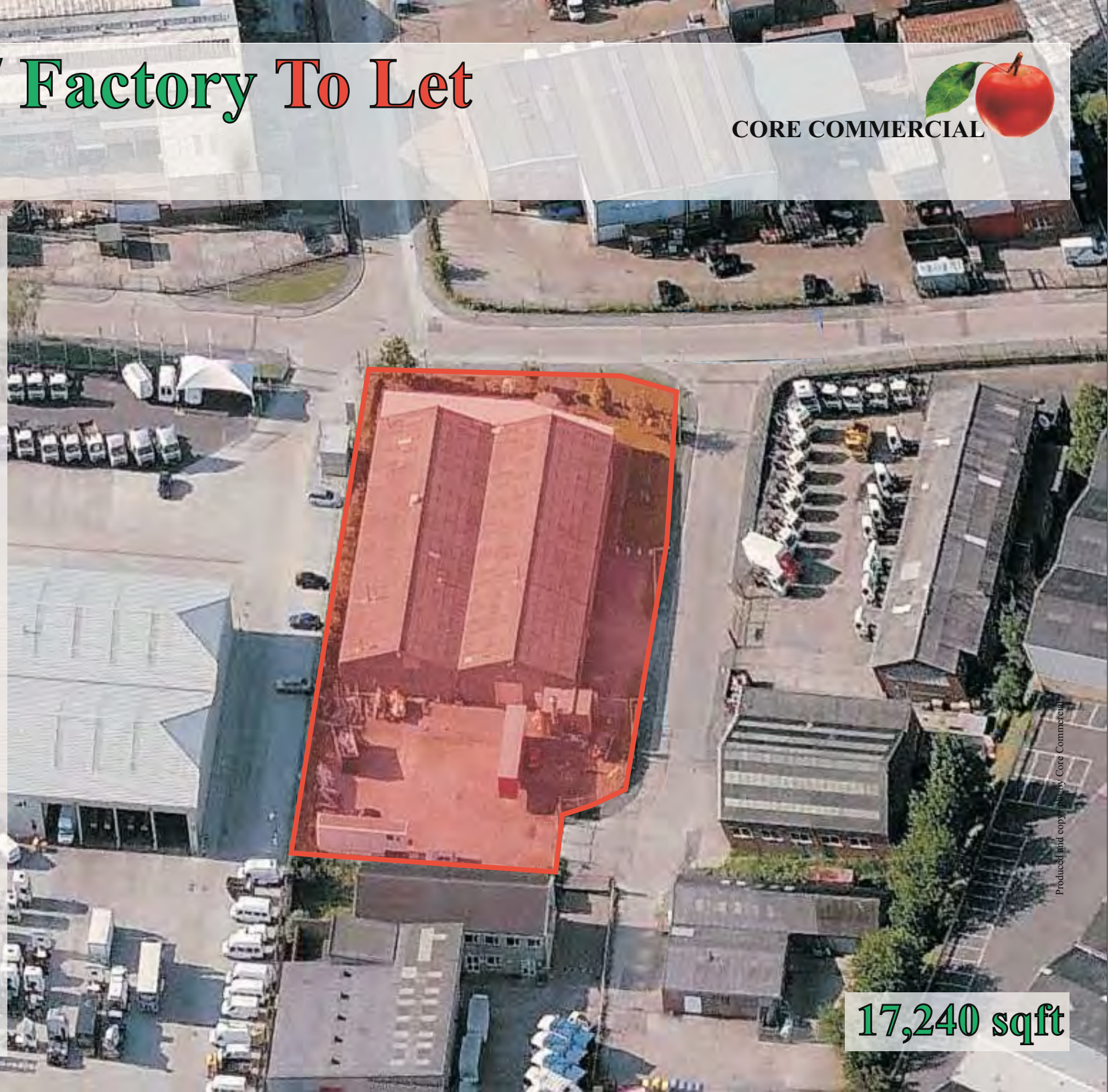
A detached concrete portal framed factory / warehouse building with brick elevations and asbestos cement roof with roof lights. 13'3" eaves height (19' peak). Gas fired heating. 3 phase power. Sodium lights. Fenced and gated yard to rear with parking to side.

Warehouse / Works	15,029
Offices	Ground 1,665
	First 546
Total approx area	17,240 sqft (1,602 sqm)

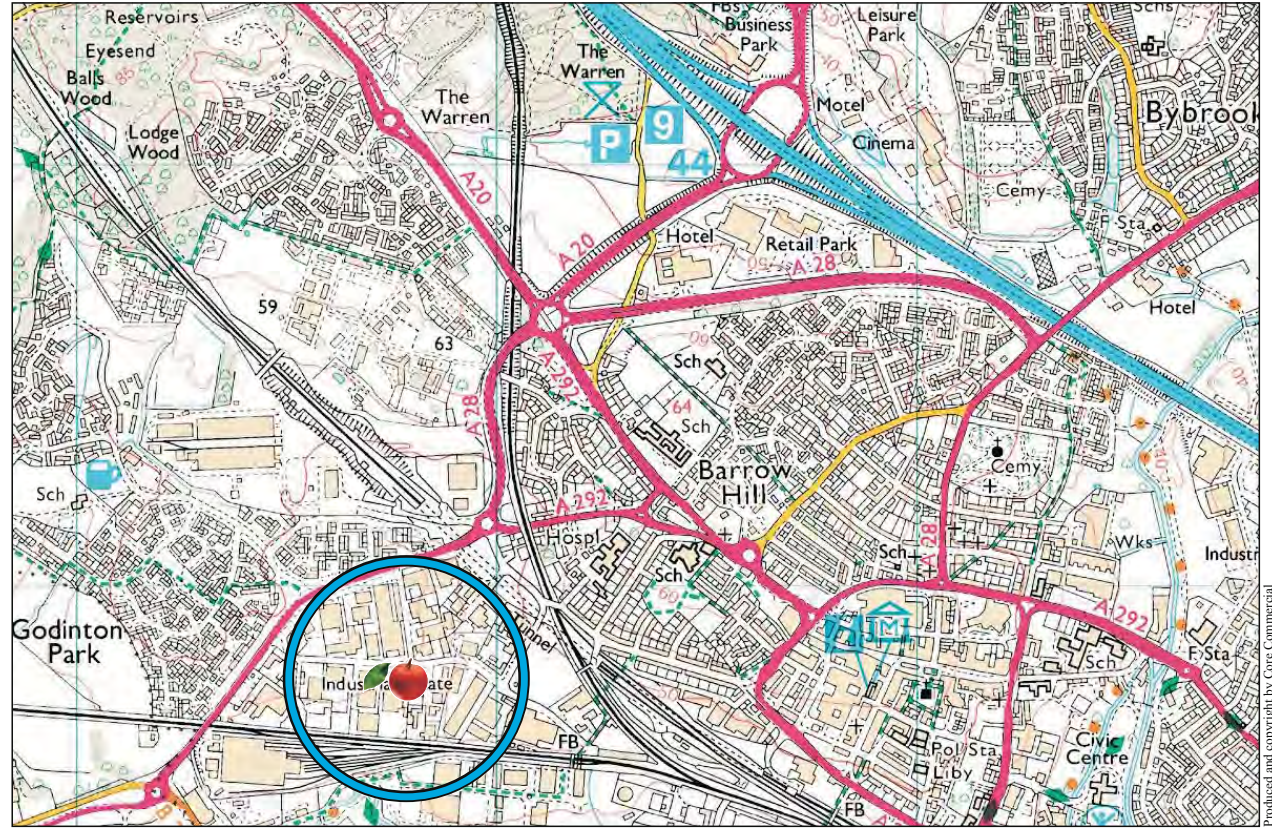
Site area approx 0.9 acre.

### Terms

To let at **£5.25 per sqft** (£90,500 pa) plus vat. Rates payable 2015/16 £24,897 (Rateable Value £50,500). May sell freehold.



**17,240 sqft**



These particulars are provided in good faith but do not form part of a contract. No statements are to be relied upon as statements of fact and parties intending to rely upon the information for any purpose whatsoever must satisfy themselves by inspection or otherwise as to the correctness of each statement


**CORE**  
 COMMERCIAL  
**01892 834483**  
[www.CoreCommercial.co.uk](http://www.CoreCommercial.co.uk)

**David Marriott**  
[David@CoreCommercial.co.uk](mailto:David@CoreCommercial.co.uk)  
**Neil Mason**  
[Neil@CoreCommercial.co.uk](mailto:Neil@CoreCommercial.co.uk)  
**Stephen Smith**  
[Stephen@CoreCommercial.co.uk](mailto:Stephen@CoreCommercial.co.uk)