

Office, Workshop & Yard For Sale or To Let

2,140 sqft

Former Waycon premises
North Street

HEADCORN
Kent TN27 9NN

Location

Headcorn lies about 8 miles southeast of Maidstone on the A274. The property is located just off North Street opposite Woods cycles.

Description

A detached workshop and office building of brick and tile construction and attached mono pitched store. Aluminium double glazed windows. Kitchen, ladies & gents toilets. Carpeting and lighting.

Accommodation

Ground	Office	500
	Works / Store	1,090
First	Office	210
	Store / office	<u>340</u>
		<u>2,140 sqft</u>

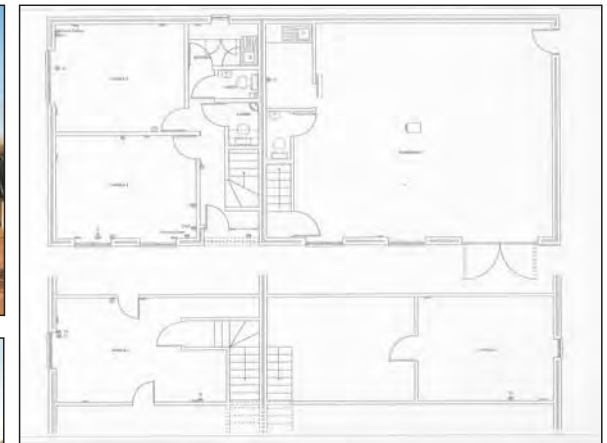
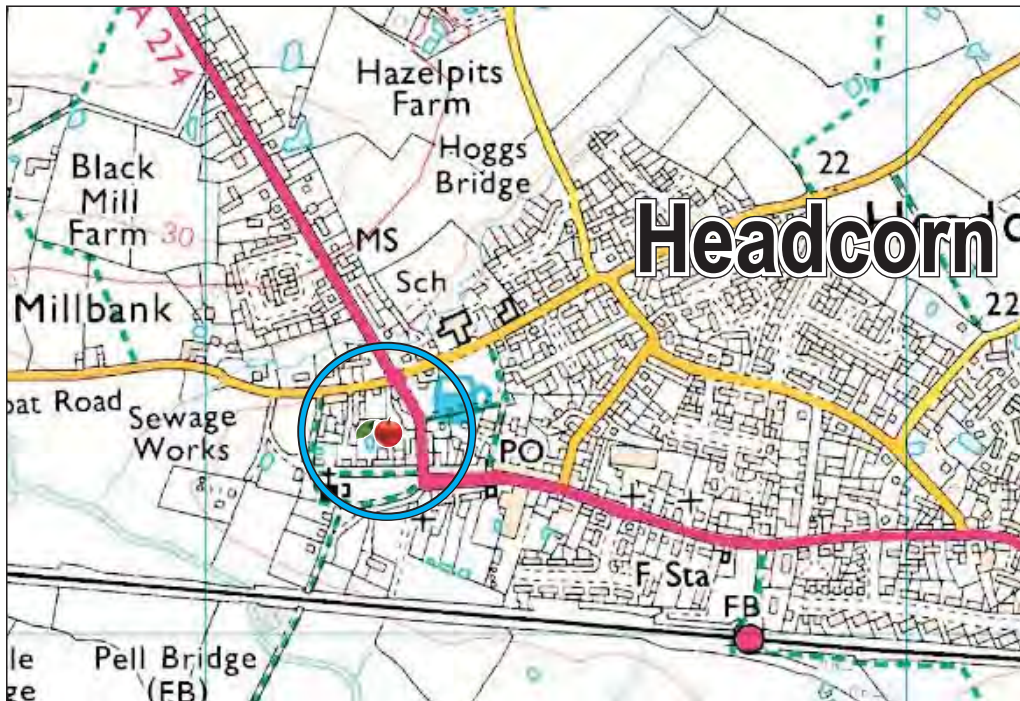
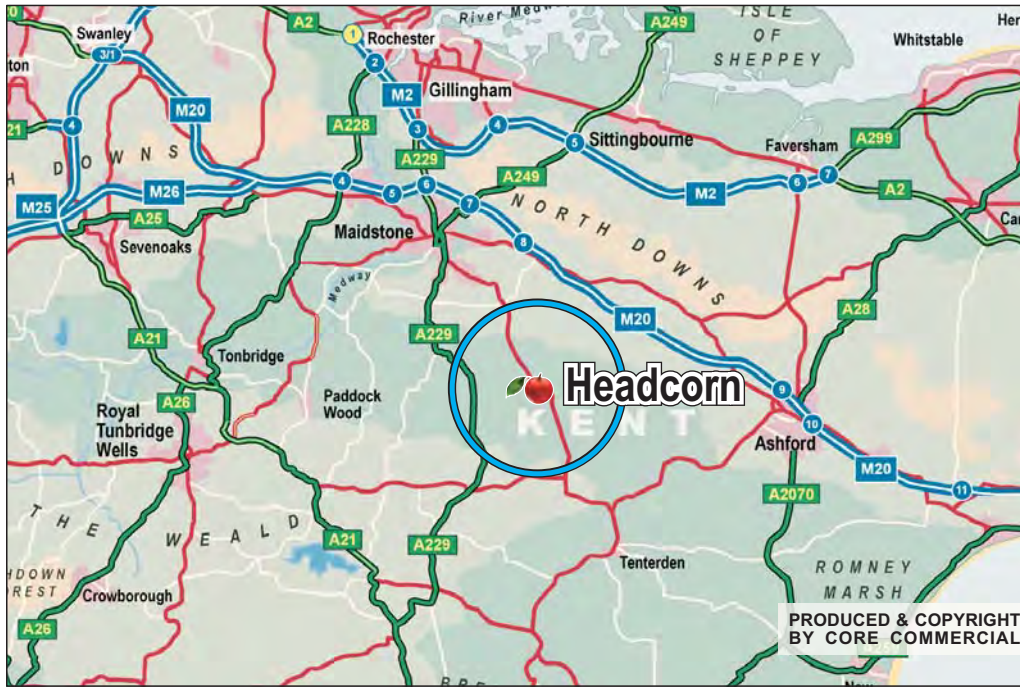
6 parking spaces
on 0.17 acre site

Terms

For sale freehold at £349,950, subject to contract or to let on a new lease at £19,950 per annum, plus VAT. Rates payable £4,655 2011/12 (Rateable Value £10,750).

Leisure Planning Permission Granted!





Contact: David Marriott or Neil Mason
01892 834483
www.CoreCommercial.co.uk

IMPORTANT NOTICE The agents give notice to anyone who may read these particulars as follows: 1. These particulars are prepared for the guidance only of prospective purchasers. They are intended to give a fair overall description of the property but are not intended to constitute part of an offer or contract. 2. Any information contained herein (whether in the text, plans or photographs) is given in good faith but should not be relied upon as being a statement or representation of fact. 3. Nothing in these particulars shall be deemed to be a statement that the property is in good condition or otherwise nor that any services or facilities are in good working order. 4. The photographs appearing in this brochure show only certain parts and aspects of the property at the time when the photographs were taken. Certain aspects may have changed since the photographs were taken and it should not be assumed that the property remains precisely as displayed in the photographs. Furthermore no assumptions should be made in respect of parts of the property which are not shown in the photographs. 5. Any areas, measurements or distances referred to herein are approximate only. 6. Where there is reference in these particulars to the fact that alterations have been carried out or that a particular use is made of any part of the property this is not intended to be a statement that any necessary planning, building regulations or other consents have been obtained and these matters must be verified by any intending purchaser. 7. Descriptions of a property are inevitably subjective and the descriptions contained herein are used in good faith as an opinion and not by way of statement of fact. The landlord accepts the principles of the Code of Practice for Commercial Leases in England and Wales. Alternative lease terms are available upon request. A copy of the code can be obtained from the Royal Institution of Chartered Surveyors, 12 George Street, Parliament Square, London, SW1P 3AD or alternatively from www.commercialleasecode.co.uk