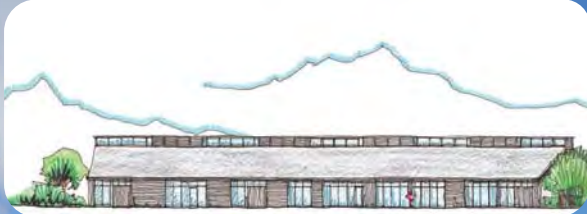


Development Site For Sale

CORE
COMMERCIAL
01892 834483



**Bysing Wood Road,
Western Link**

Faversham
Kent ME13 7UD

Location

Located 1 mile northwest of Faversham town centre just off Western Link.

Description

A virgin site of about 1.1 acre. The planning permission for 10,936 sqft of B1 offices or light industrial use with 64 car parking spaces recently expired but we see no reason why this should not be granted again. Potential for alternative uses, subject to planning.

Block 1 ~ **6,200 sqft**

Block 2 ~ **4,736 sqft**

1.1 acre site for **10,936 sqft**

Terms

For Sale freehold. Offers in the region of **£300,000** (no VAT) subject to contract and obtaining planning permission. May pre-let new facility, subject to status.

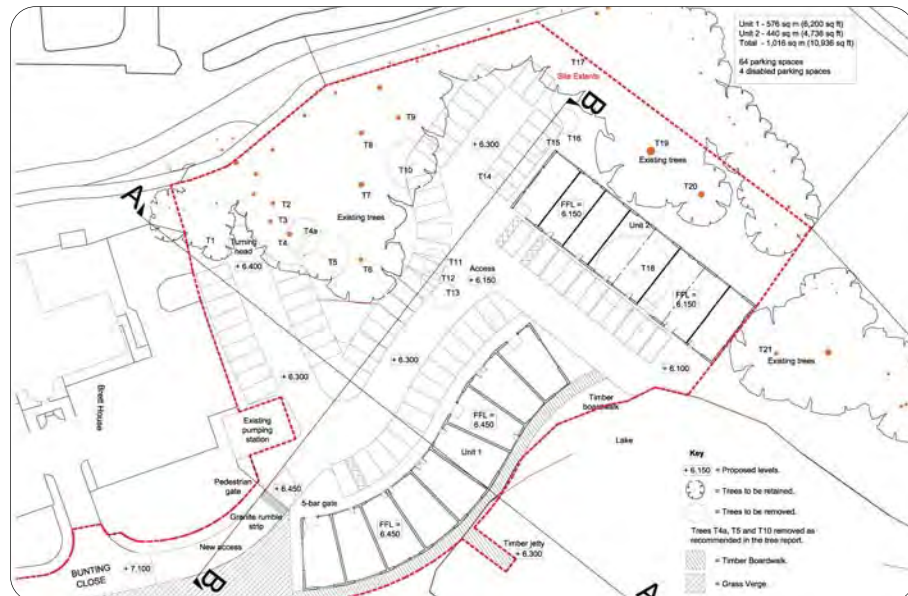
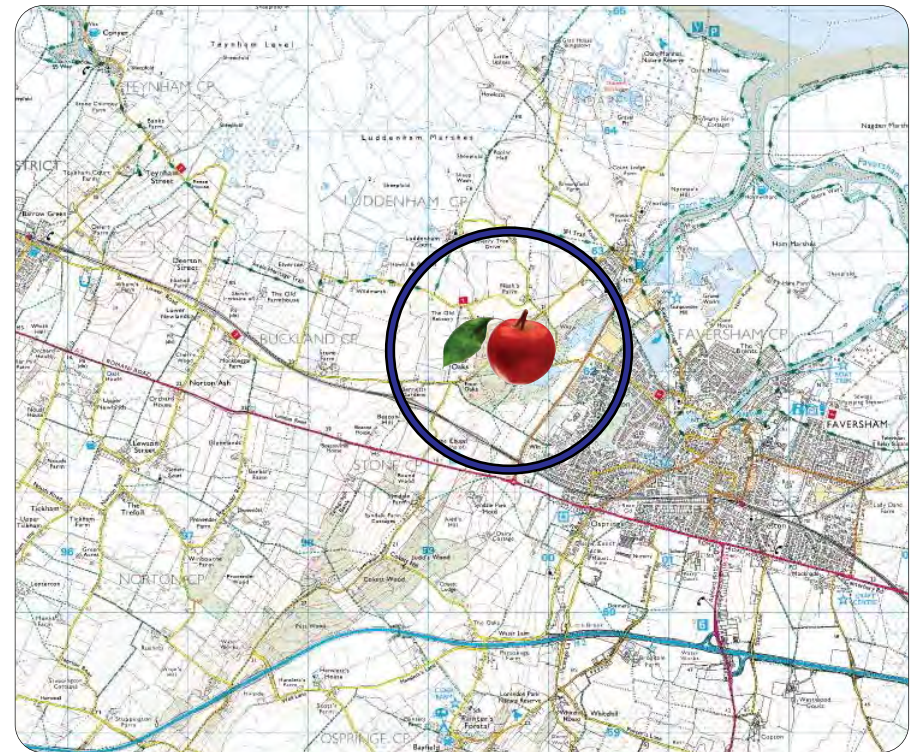
1.1 Acres for 11,000 sqft

CORE

COMMERCIAL

01892 834483






CORE
COMMERCIAL
01892 834483
www.CoreCommercial.co.uk

David Marriott
 David@CoreCommercial.co.uk
Neil Mason
 Neil@CoreCommercial.co.uk

These particulars are provided in good faith but do not form part of a contract. No statements are to be relied upon as statements of fact and parties intending to rely upon the information for any purpose whatsoever must satisfy themselves by inspection or otherwise as to the correctness of each statement.

Core Commercial Limited, Unit 11 Offices, Dana Estate Transfesa Road, Paddock Wood, Kent TN12 6UT