

# Warehouse / Industrial Units To Let

**CORE**  
COMMERCIAL  
01892 834483



**Blaze Industrial Est  
Leigh Road**

## **RAMSGATE** Kent CT12 5EU

### **Location**

Just off the A256 Haine Road, 0.8 mile from the A299 Thanet Way and 1.1 miles from the Westwood Cross Shopping Centre, 3 miles from Ramsgate and 4 miles to both Margate and Broadstairs.

### **Description**

An existing factory to be subdivided in to 8 self contained industrial / warehouse units, each with their own services, toilets, 3 phase power. Roller shutter doors. Detailed individual unit plans are available.

Unit	GF	FF	Total sqft	
1	8 772	3 057	11 829	
2	8 665	5 909	14 574	U/O
3	10 225	0	10 225	
4	8 988	0	8 988	
5	7,965	0	7,965	
6	624	0	624	
7	8,955	0	8,955	
8	0	4,187	4,187	

### **Terms**

To Let individually or combined. Rent upon application. Business rates to be assessed.



**600 - 67,000 sqft**

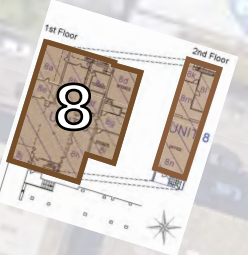


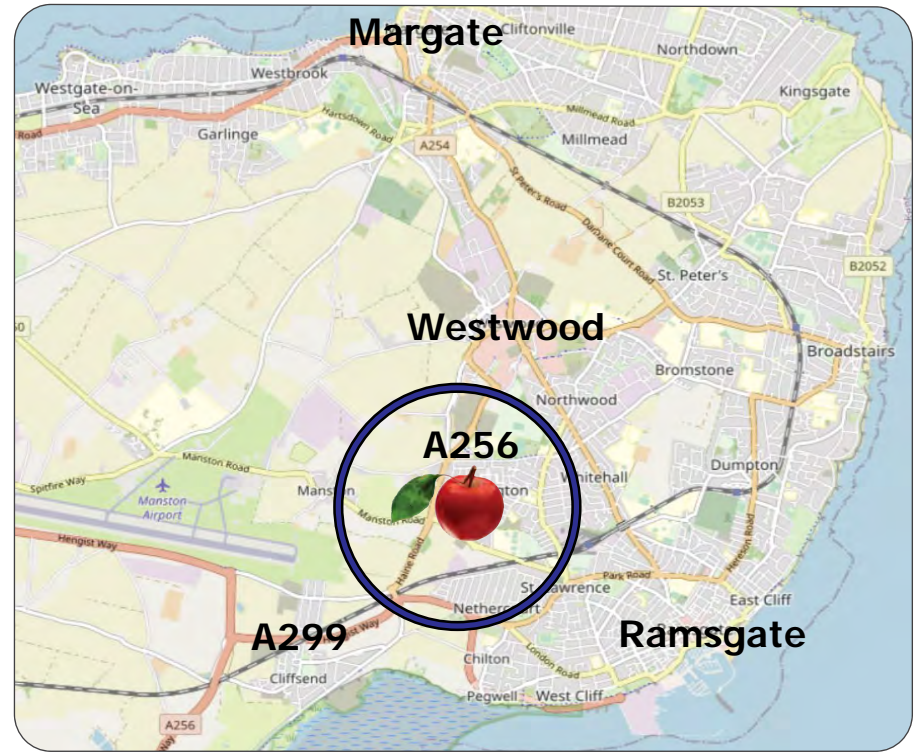
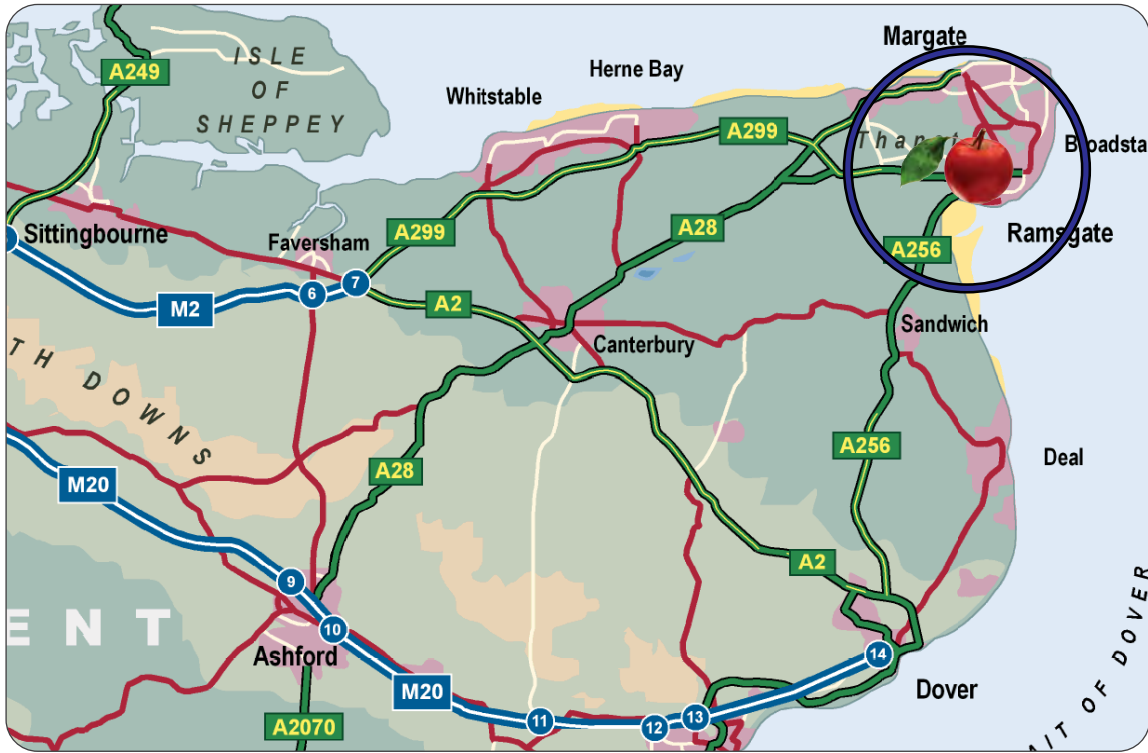
- Main Building
- Site Boundary
- Min standard parking space
- Min disabled parking space
- Rigid Goods vehicle space

Area 1  
1000m<sup>2</sup> (10,750 ft<sup>2</sup>)

Area 2  
615 m<sup>2</sup>  
(6,620 ft<sup>2</sup>)

Area 3  
934 m<sup>2</sup> (10,000 ft<sup>2</sup>)






**CORE**  
COMMERCIAL  
**01892 834483**  
[www.CoreCommercial.co.uk](http://www.CoreCommercial.co.uk)

Neil Mason  
Neil@CoreCommercial.co.uk

David Marriott  
David@CoreCommercial.co.uk

Core Commercial Limited, Nettlestead House,  
Maidstone Road, Paddock Wood, Kent TN12 6DA  
and 6 Kevington Close, Orpington, Kent BR5 2NX

These particulars are provided in good faith but do not form part of a contract. No statements are to be relied upon as statements of fact and parties intending to rely upon the information for any purpose whatsoever must satisfy themselves by inspection or otherwise as to the correctness of each statement.