

Business Unit To Let

**Unit 12 Bredhurst Business Park
Westfield Sole Road
Boxley**

CHATHAM

Kent ME14 3EH

Location

Located north of Chatham 2.5 miles to junction 3 of M2 motorway along Walderslade Woods.

Description

A industrial / warehouse unit of steel portal frame with profile steel cladding and roof. Concrete floor, roller shutter door, glazed pedestrian entrance & windows at first floor. Integral offices. WC. 3 phase power.

6 parkings spaces plus loading area

Nearby yard also available separately

Accommodation

Ground	1,482
First	<u>404</u>

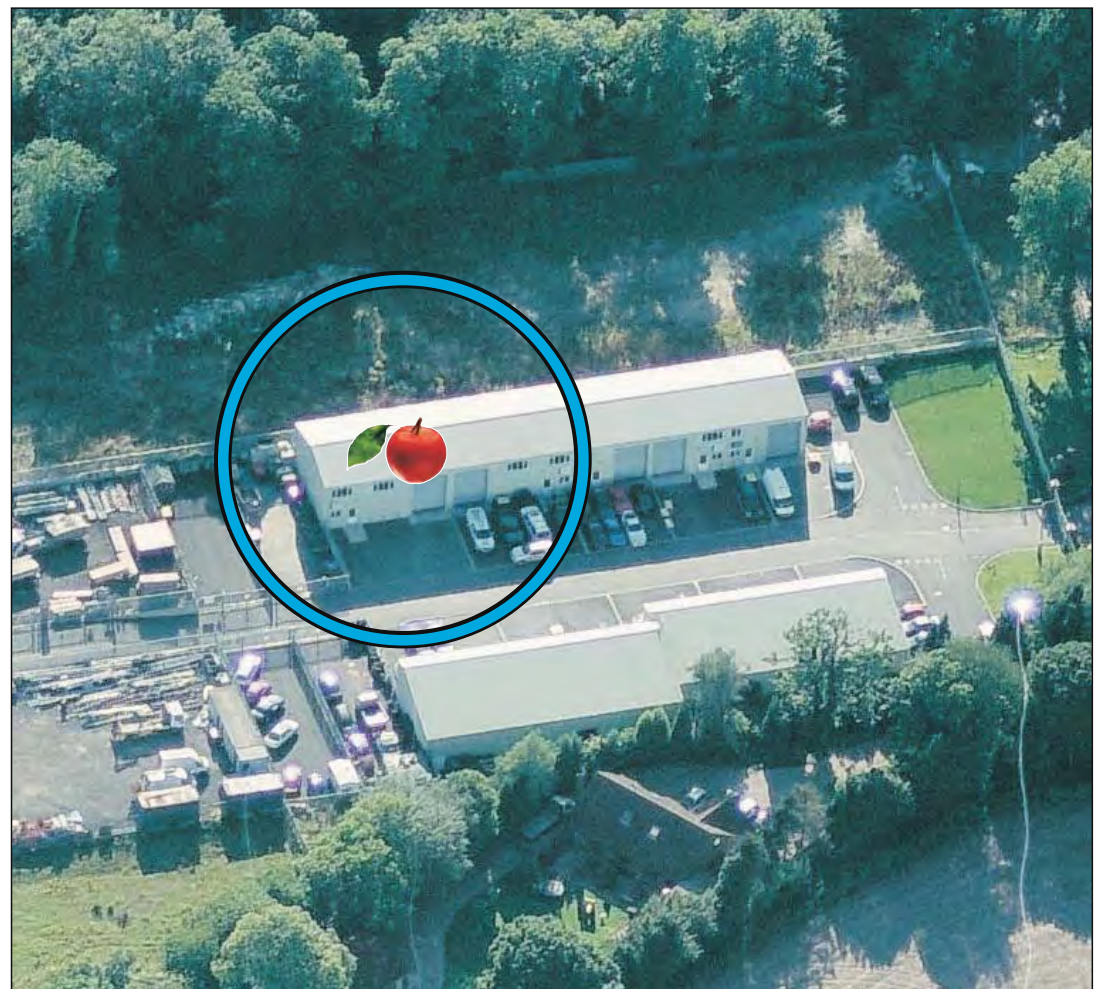
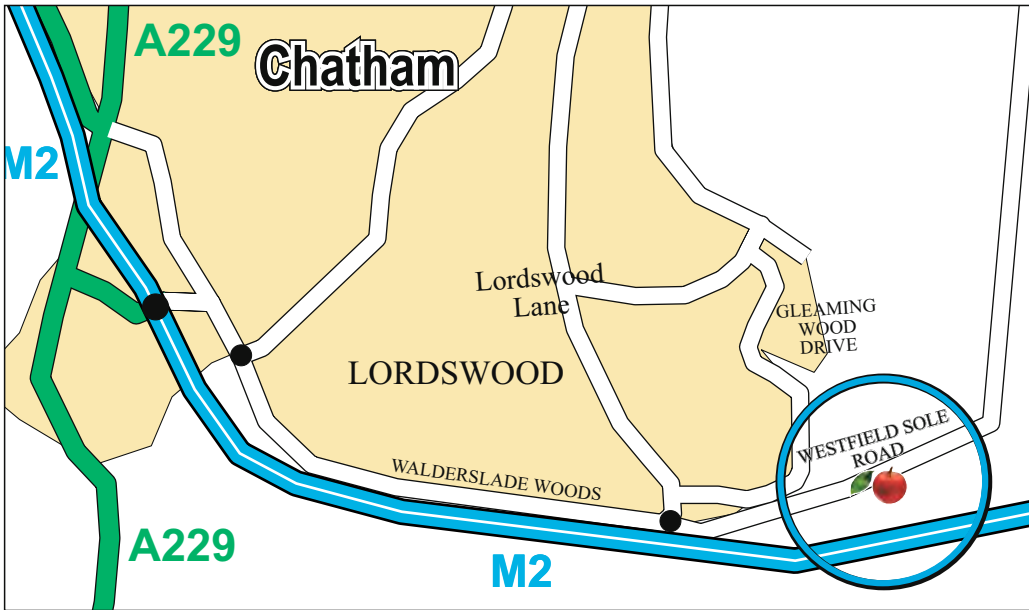
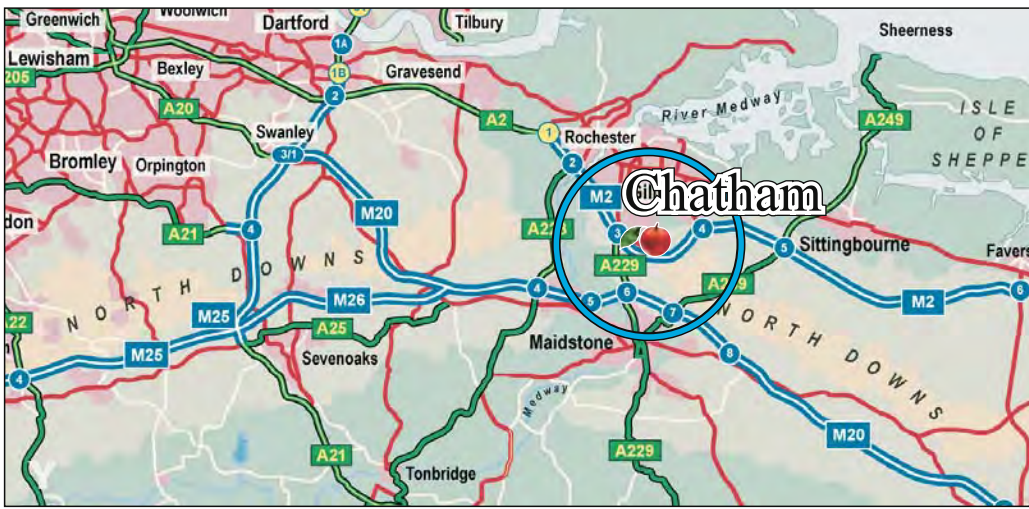
1,886 sqft

Terms

To let on a new lease at **£12,260** pa. (£6.50 per sqft) Plus VAT. Service charge 10% of annual rent. Rates payable 2016/17: £5,560 (Rateable Value £11,190). Eligible small business rate relief.



1,886 sqft




CORE
 COMMERCIAL
01892 834483
www.CoreCommercial.co.uk

David Marriott
 David@CoreCommercial.co.uk
 Neil Mason
 Neil@CoreCommercial.co.uk
 Stephen Smith
 Stephen@CoreCommercial.co.uk

These particulars are provided in good faith but do not form part of a contract. No statements are to be relied upon as statements of fact and parties intending to rely upon the information for any purpose whatsoever must satisfy themselves by inspection or otherwise as to the correctness of each statement.