

Business Unit To Let



**24a, Caring Lane
Bearsted**

MAIDSTONE
Kent ME14 4NJ

Location

Maidstone is the county town of Kent about 35 miles Southeast of London. Bearsted is due East of the town and about 1.3 miles to junction 8 of M20.

Description

A former winery providing warehouse office & store with wc and covered loading. Trade Counter. Eaves height from 11' (peak 16'). Tarmac forecourt with parking for at least 6 cars.

1,432 sqft

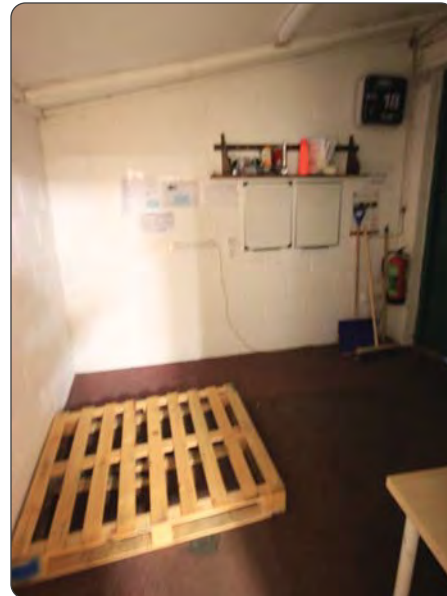
Covered loading 254 sqft

Terms

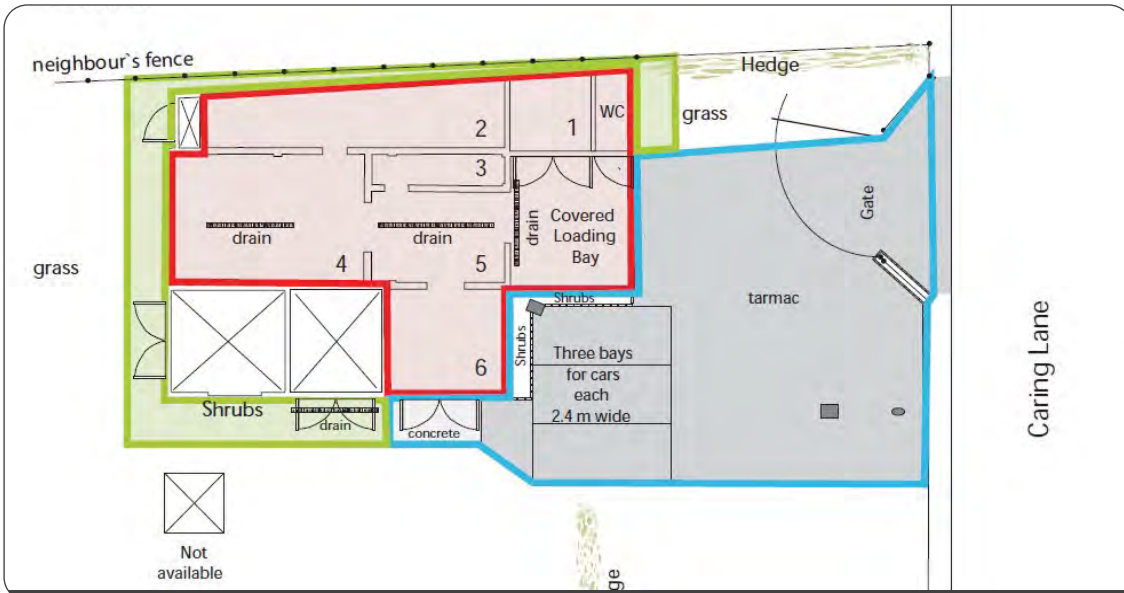
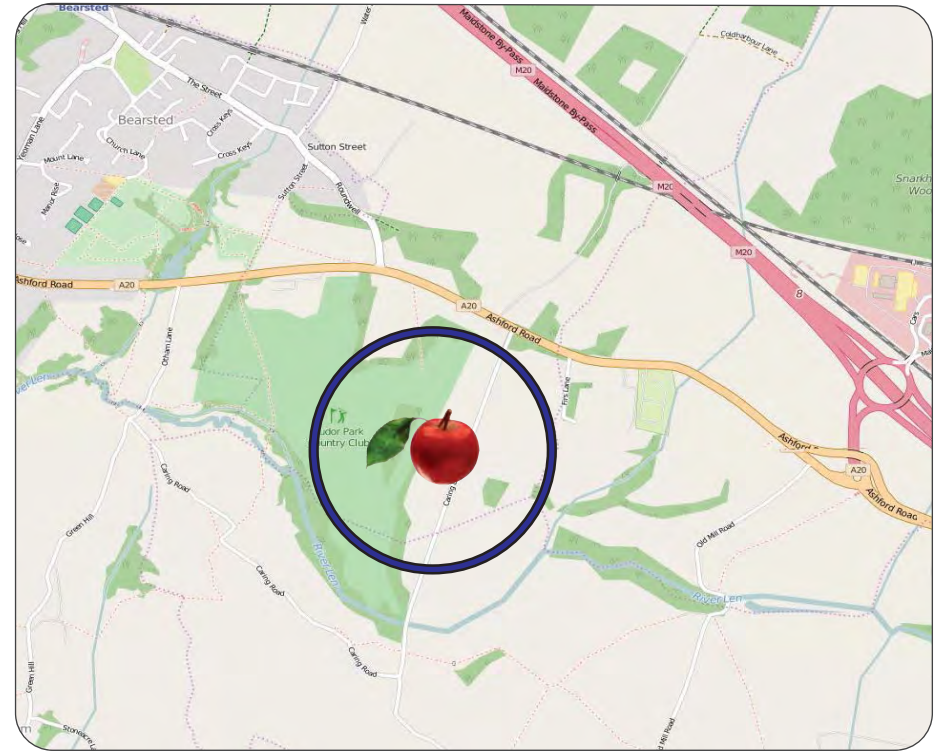
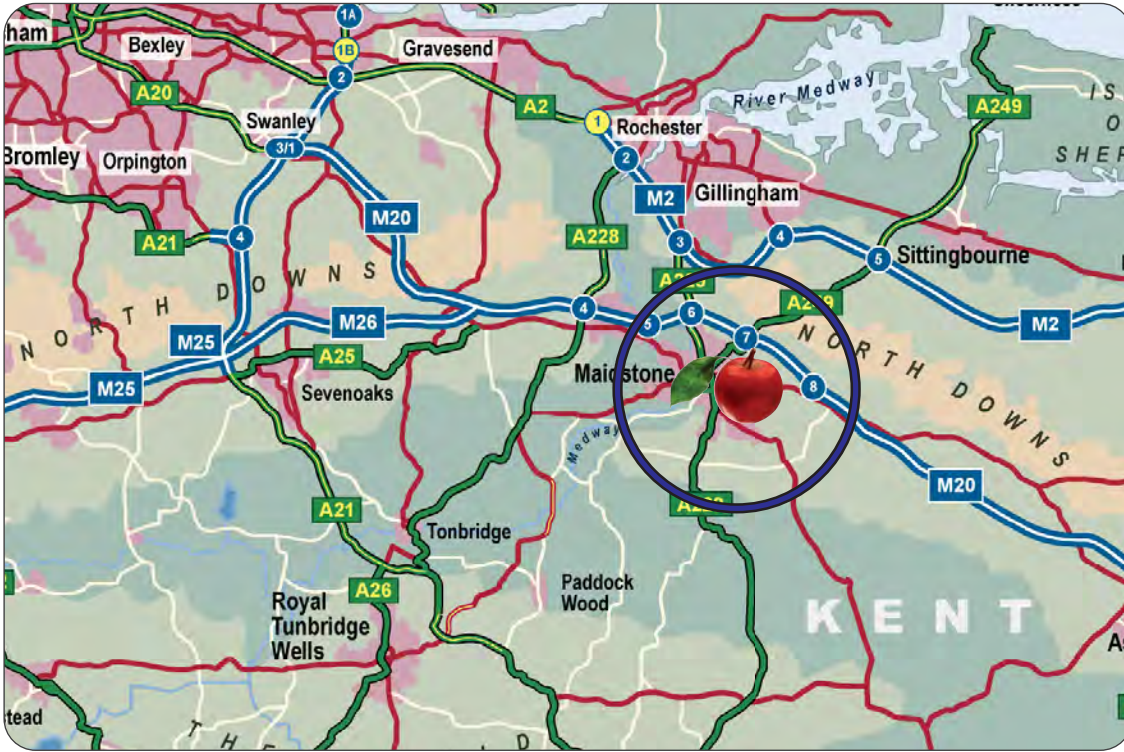
To let on new 4 year lease (rent review at end of 2nd year) at **£13,950 pa. No VAT**. Rent deposit will be required. **No business rates** are payable if this is your sole property. (otherwise: £3,643 pa for 2022/23. Rateable Value £7,300).



1,432 sqft



These particulars are provided in good faith but do not form part of a contract. No statements are to be relied upon as statements of fact and parties intending to rely upon the information for any purpose whatsoever must satisfy themselves by inspection or otherwise as to the correctness of each statement.




CORE
COMMERCIAL
01892 834483
www.CoreCommercial.co.uk

Neil Mason
 Neil@CoreCommercial.co.uk
David Marriott
 David@CoreCommercial.co.uk

Core Commercial Limited, Nettlestead House,
 Maidstone Road, Paddock Wood, Kent TN12 6DA
 and 6 Kevington Close, Orpington, Kent BR5 2NX

These particulars are provided in good faith but do not form part of a contract. No statements are to be relied upon as statements of fact and parties intending to rely upon the information for any purpose whatsoever must satisfy themselves by inspection or otherwise as to the correctness of each statement.