

Workshops To Let



One unit remaining!

Units 21 & 22
Warsop Trading Estate
Hever Road
EDENBRIDGE
Kent TN8 5LD

Location

Edenbridge is south of the M25, 10 miles from junction 6 where it meets the A22 and 13 miles from the M23, Gatwick and Crawley on the B2026. The property lies about 0.3 mile south of the town on Hever Road and about 0.8 mile from Edenbridge town station.

Description

Two single storey workshops of block construction with insulated steel truss roof. Workshop eaves height 9'11". Strip lighting. Integral offices. Toilet. B1 c (Light Industrial), B2 (General Industrial) and B8 (Storage & Distribution) uses. 3 parking spaces in front of unit plus lots of parking in overflow car park.

Unit 21	3,946 sqft
Unit 22	3,935 sqft
Combined	7,881 sqft

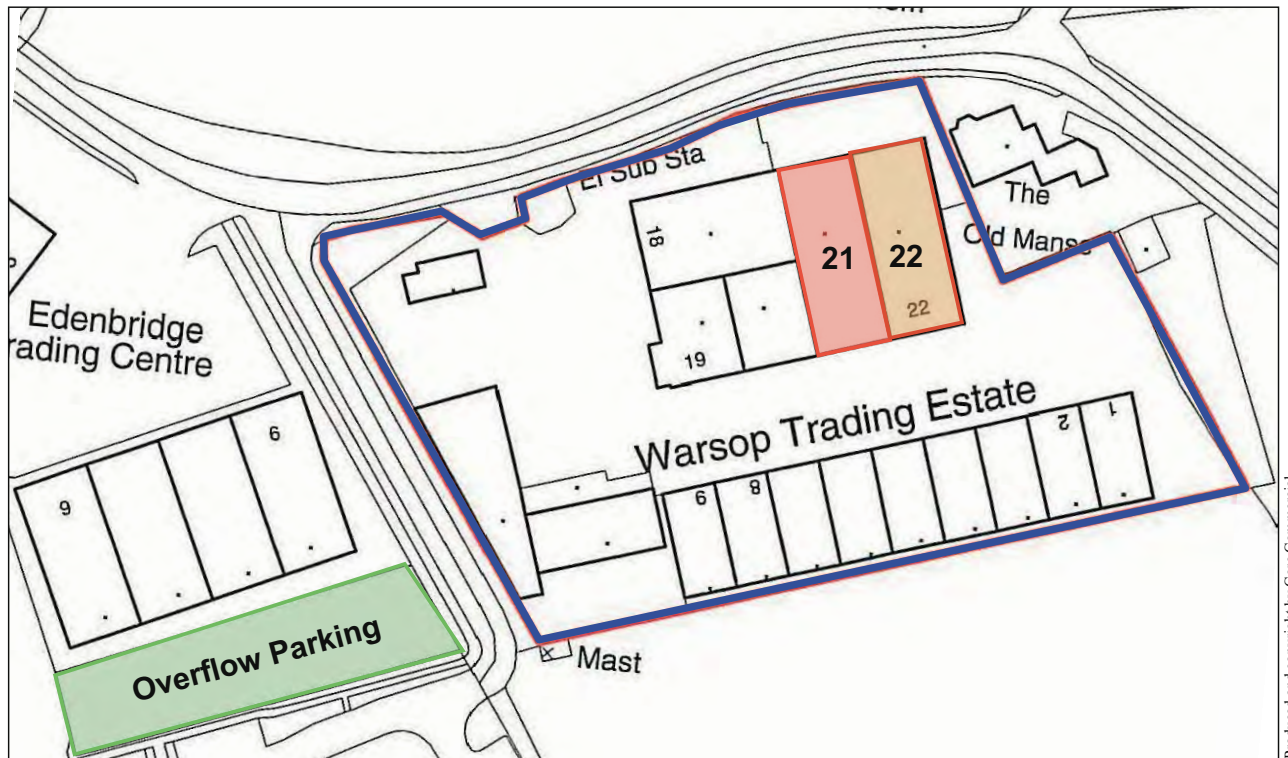
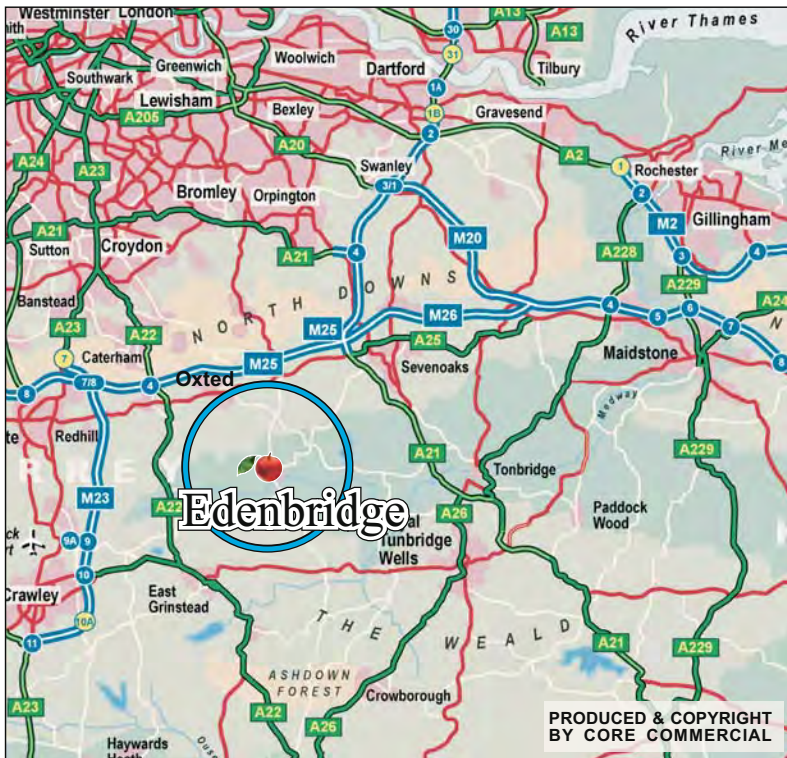
Terms

To let individually or combined. **£5.25 per sqft** plus vat. Rates payable 2017/18 £8,502 each (Rateable Value £17,750 each)

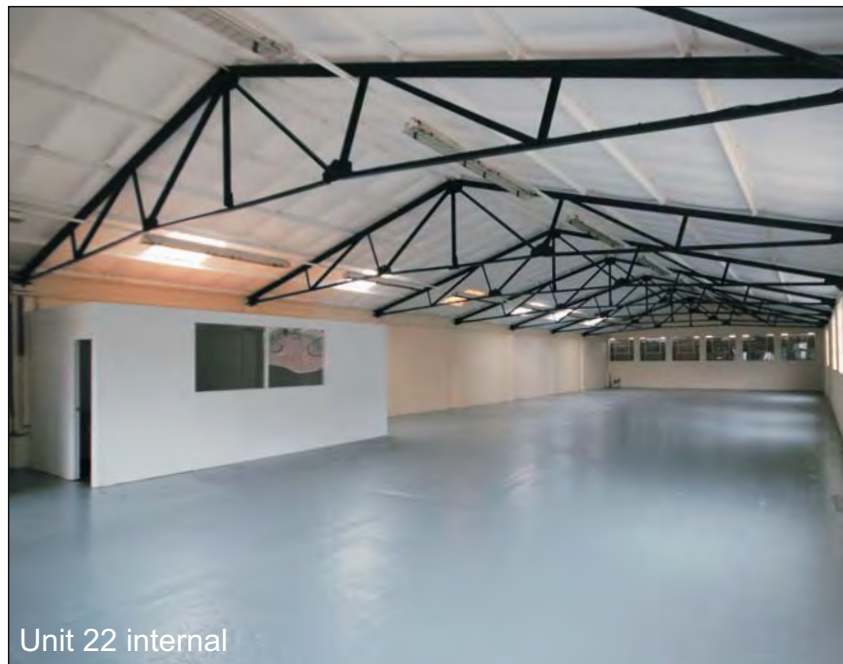
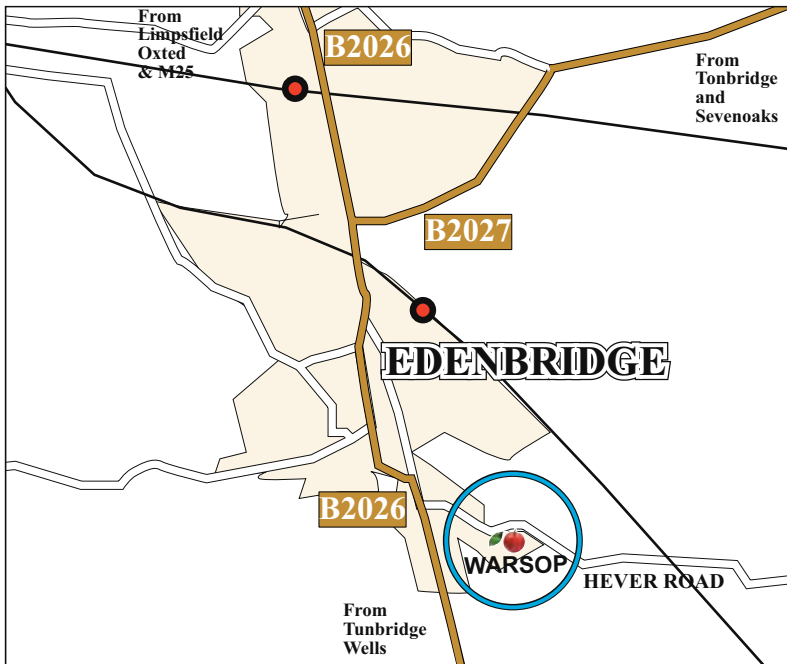
Produced and copyright by Core Commercial



4,000 to 8,000 sqft



Produced and copyright by Core Commercial



David Marriott
David@CoreCommercial.co.uk
Neil Mason
Neil@CoreCommercial.co.uk
Stephen Smith
Stephen@CoreCommercial.co.uk

These particulars are provided in good faith but do not form part of a contract. No statements are to be relied upon as statements of fact and parties intending to rely upon the information for any purpose whatsoever must satisfy themselves by inspection or otherwise as to the correctness of each statement.