

Business Unit To Let



**The Studio, The Mill
Esparto Way**

SOUTH DARENTH Kent DA4 9FF

Location

Situated on the Mill development at South Darenth behind the Co-op. The A225 is within 0.8 miles and M25 within 3.5 miles. Farningham Road Train Station is just 0.6 mile away and provides has a direct line into London Victoria.

Description

A ground floor business unit with office/reception with storage/studio behind. 2 double doors. Toilet. Kitchen. Carpet to office with skirting heating. Max height to storage area 12'5".

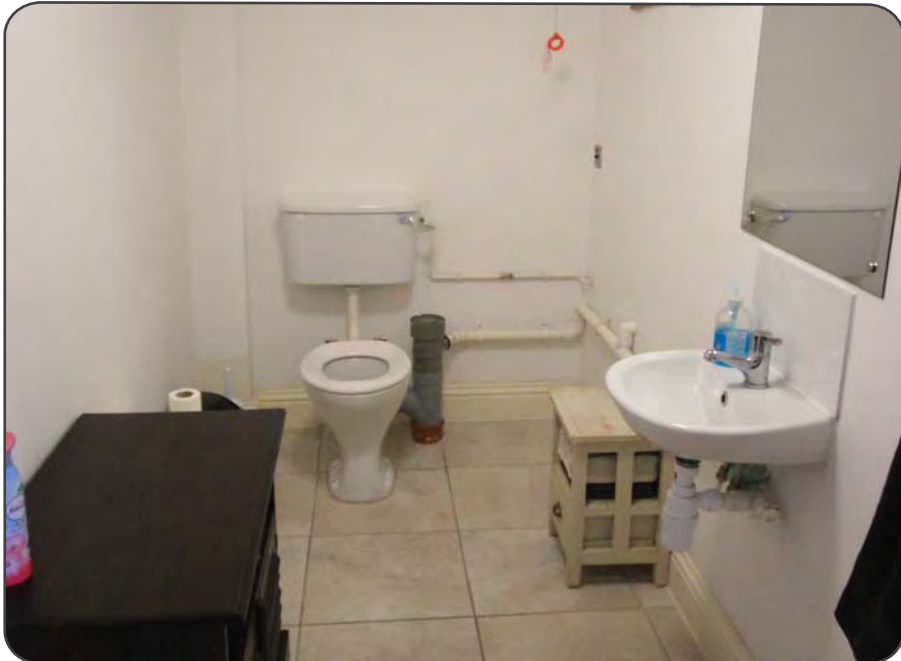
Office reception 326
Studio / store 1,107
1,433 sqft

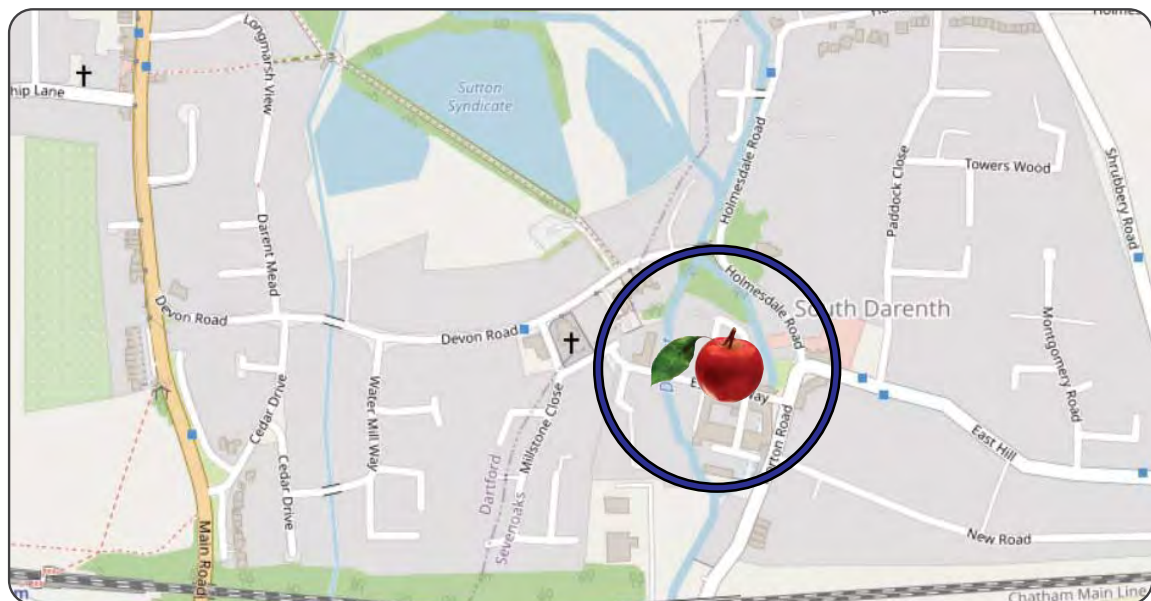
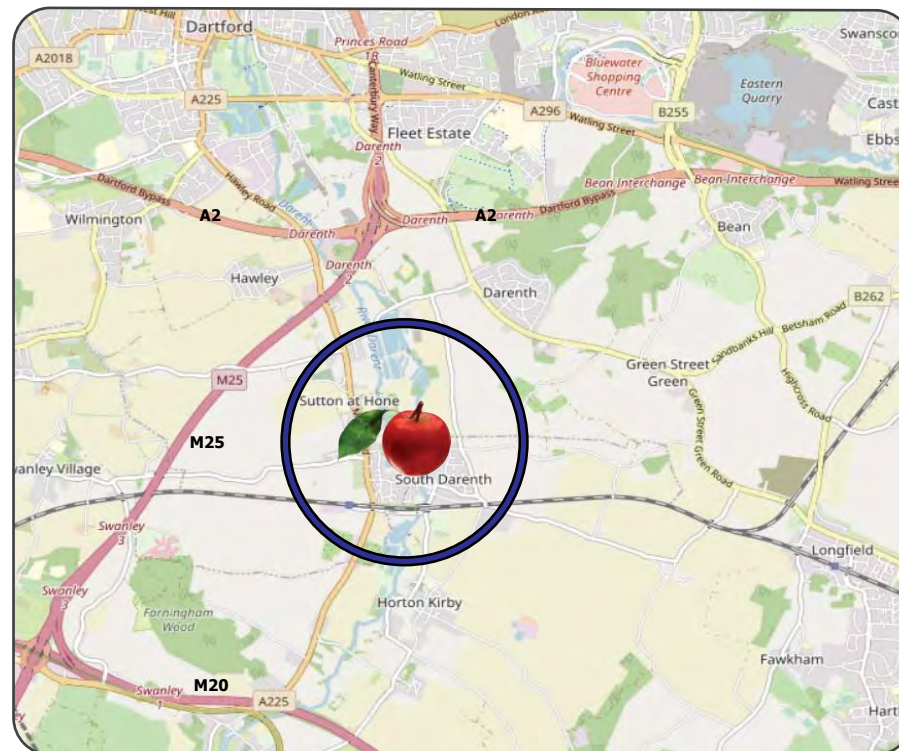
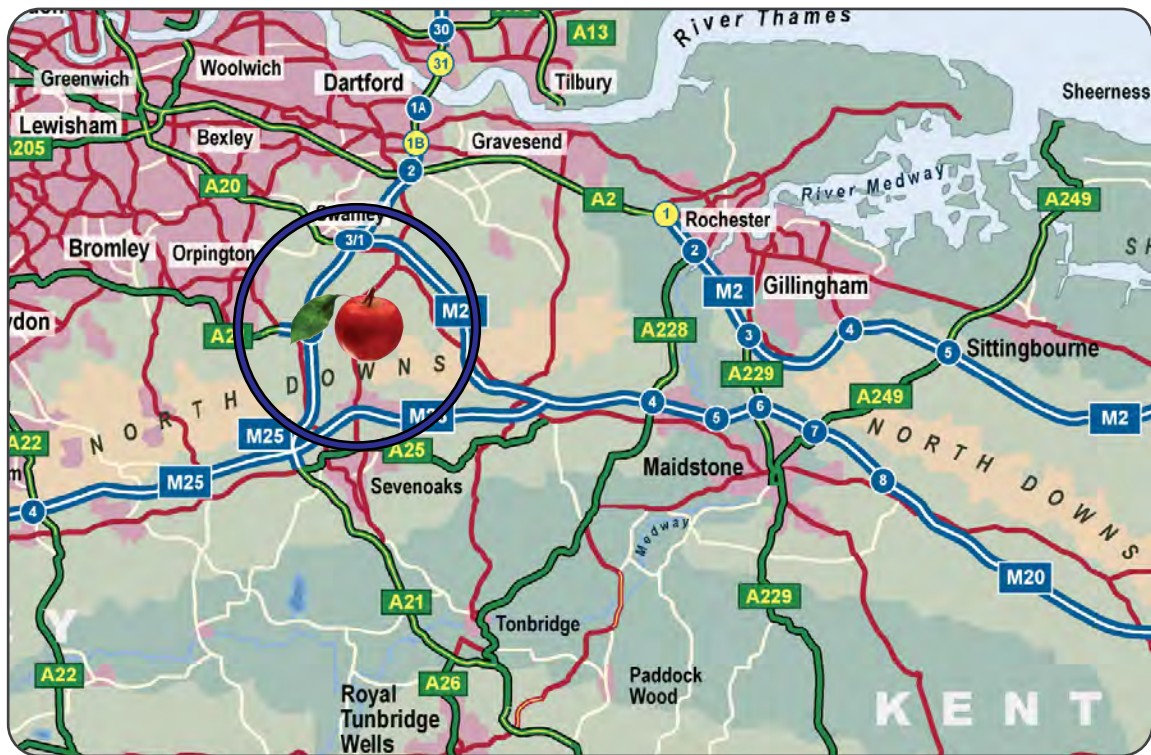
Terms

To Let at **£17,950 pa. No business rates** payable if this is your sole property otherwise Business rates payable 21/22 £5,863 (Rateable Value £11,750). A rent deposit will be required.



1,433 sqft






CORE
 COMMERCIAL
01892 834483
www.CoreCommercial.co.uk

David Marriott
 David@CoreCommercial.co.uk
Neil Mason
 Neil@CoreCommercial.co.uk

These particulars are provided in good faith but do not form part of a contract. No statements are to be relied upon as statements of fact and parties intending to rely upon the information for any purpose whatsoever must satisfy themselves by inspection or otherwise as to the correctness of each statement.

Core Commercial Limited, Unit 11 Offices, Dana Estate
 Transfesa Road, Paddock Wood, Kent TN12 6UT